



ACADEMY OF LANGUAGES

by F+U International



Programme 2023

In-person, online and hybrid language courses

Vocational College of Foreign Languages

Internationally recognised language exams

Accommodation

Heidelberg – at the heart of Europe..... 3

Heidelberg – city of romanticism and science..... 5

Academy of Languages Heidelberg 6

Why F+U? Top features at a glance 7

Cultural programme at the Academy of Languages — highlights 8

Common European Framework of Reference for Languages (CEFR) levels11

International test centre12

General information15

Individual courses (in-person, online, in-house)16

German courses for adults.....18

Our classic courses18

Compact offers: Intensive course 20 + accommodation19

Compact offers: Intensive course 30 + accommodation20

Special courses21

Evening courses23

Combination course German plus English.....23

Learners' home countries: German courses23

English courses for adults.....24

Our classic courses24

Special courses24

Compact offers: Intensive course 20 + 3025

Learners' home countries: English courses26

Educational leave/compact courses (five languages) ..28

Group offers for school pupils and adults29

German and English courses29

Accommodation and meals.....29

Transfer to/from accommodation30

Cultural programme.....30

Junior programme.....32

Summer courses German and English (6-17 years) ...32

General information about the summer courses34

Wintertime German courses for junior learners (12-17 years).....35

Russian children's academy (1-14 years).....37

Special services and courses, cultural programme.....38

Accommodation

Map: halls of residence, apartments, places of interest40

Accommodation prices: host families.....42

Accommodation prices: halls of residence43

Halls of residence – categories44

Guest houses, hotels, transfer, parking.....45

Halls of residence, apartments – information.....46

Tenancy extension, changing accommodation, cancellation.....47

Education partners of the Academy of Languages... 48

Dual study degree programmes (bachelor / master).....50

Study in Germany with language level A251

Vocational College of Foreign Languages53

Participant statistics55

Addresses, service numbers.....56





ACADEMY OF LANGUAGES

by F+U International

F+U Rhein-Main-Neckar gGmbH

Hauptstrasse 1

D-69117 Heidelberg

Tel. +49 6221 7050-4048

Fax +49 6221 23452

languages@fuu.de

www.academy-languages.de/en

Telephone service 24/7: +49 6221 9120-38

Photos: Academy of Languages, istockphoto.com, stock.adobe.com, shutterstock.com

Test centre, memberships



TestDaF

Test Deutsch als Fremdsprache



telc

LANGUAGE TESTS



VDP

VERBAND DEUTSCHER
PRIVATSCHULVERBÄNDE e.V.



TestAS

Test für Ausländische Studierende



BRITISH COUNCIL

IELTS

Testing Here



ECL



WILDAF

WIRTSCHAFTS-
UNIVERSITÄT
WIEN VIENNA
UNIVERSITY OF
ECONOMICS
AND BUSINESS



EALTA

www.ealta.eu.org

EUROPEAN ASSOCIATION
FOR LANGUAGE TESTING
AND ASSESSMENT



TOEIC®



TOEFL®



FDSV

Quality Language Learning



fadaf



Bildungsurlaub

www.fuu-languages.com



The Jesuit Church in Heidelberg, built between 1712 and 1759.

Heidelberg – city of romanticism and science

Heidelberg, former capital of the Palatinate and the spiritual centre of Calvinism, nestles in the picturesque Neckar valley and is known for its particularly mild climate. Over the years, Heidelberg's beauty has attracted a number of poets, painters and scientists. In the early 19th century, the city on the Neckar became the most important **centre of German late romanticism**, and is inextricably linked with the poets Arnim, Brentano, Goethe and Eichendorff.

The **Ruprecht-Karls University of Heidelberg** was founded in 1386 and is Germany's oldest university. In 2019 its status as a university of excellence was confirmed once again in the national Excellence Initiative. The university has therefore retained its leading position among Germany's institutes of higher education. Alongside Munich's LMU and TU, Heidelberg University is traditionally recognised as one of the three best universities in Germany by the most renowned university rankings (Times Higher Education World, Shanghai Ranking, QS World University Ranking).

Several monuments reveal the Neckar city's diverse history. Overlooking the river Neckar, some 70 metres below, is the city's most famous landmark, which sits on the side of Königstuhl, its eponymous mountain. The **ruins of the Elector's castle** are one of the most impressive sights on any visit to Germany (in 2019, the castle was among Germany's most popular destinations for international visitors). Having climbed up to the castle, visitors pass through the gate into the famous '**Hortus Palatinus**' garden, created at the beginning of the 17th century. From the castle garden, there is a breathtaking view of Heidelberg, including the **Philosophers' Walk** on the opposite bank of the Neckar. Fascinating buildings dating back to a variety of epochs surround the inner courtyard. Situated in the Elector's wine cellar is the world's largest barrel, which was once filled with wine. It has rarely failed to impress – except in the case of **Perkeo**, the barrel's gnomish guard. Once, when asked if he could drink the barrel dry, his answer was a nonchalant 'perché no' – why not? – which is how he came to earn his name.

The baroque townhouses and their ornamental facades and doorways are a striking feature of any walk round the **Old Town**. The heart of the Old Town is the market square, between the Evangelical **Church of the Holy Spirit** and the grand renaissance building 'Zum Ritter'. Pubs and restaurants line the old alleyways leading away from the church.

Spanning the Neckar is the **Old Bridge**, one of the most beautiful stone bridges in Germany. Not far from University Square is the **Jesuit Church**. Built in the early 18th century and adorned with several figures of the Virgin Mary and saints, the church is the Old Town's symbol of Catholicism, which regained its foothold in Heidelberg following the upheaval of the Thirty Years War and the Palatinate War of Succession.

The wooded hills around Heidelberg cloak the city in a stunning green. There is also plenty to explore in the surrounding area, including the Neckar valley forts, the German wine route, the ancient cultivated landscape along the Upper Rhine and the hills of the Odenwald and Black Forest.

Proximity to Frankfurt, Karlsruhe/Baden-Baden and Stuttgart airports means Heidelberg is easily accessible to its guests from all over the world.

Heidelberg is synonymous with tradition and romanticism, but is also a modern, world-class science and **business centre**. The city is home to the tradition-steeped university, the Academy of Sciences, the German Cancer Research Centre (DKFZ), four Max Planck institutes, the European Laboratory for Molecular Biology (EMBL), the Centre for Asian and Transcultural Studies (CATS), the Print Media Academy of Heidelberger Druckmaschinen, the SAS Institute and several research centres belonging to international companies. This cluster of sciences is unparalleled in Germany and forms the foundation for a dynamic, science-orientated economy that elevates Heidelberg – despite a population of just 160,000 – to its position as one of Germany's leading economic centres.

Heidelberg is also one of Germany's leading **cultural centres**, as demonstrated by its wealth of museums and theatres. Literature is ever-present in the city and since December 2014 Heidelberg has been a **UNESCO City of Literature**. Together with the neighbouring cities in the Rhine-Neckar metropolitan area (including Mannheim, Ludwigshafen, Speyer, Schwetzingen and Worms), Heidelberg offers an array of nationally significant cultural events.

International language school

The language school is situated in the historic centre of the university city, just a few metres from the Neckar. The school building offers fantastic views of the Old Town, the castle and the Neckar valley.

The F+U Academy of Languages is one of the largest language schools in Germany today. The language courses and exams in Heidelberg are taken by more than 10,000 language students and exam candidates every year. Every year, learners from over 100 countries take part in the German courses. Thanks to its **internationality**, the school gives learners a unique opportunity to meet other people and to find out more about their language and culture, and to practise new language skills – between classes or during a break in the atrium, for instance, or when taking part in the cultural and sporting activities we offer several times a week.

With 50 multimedia-equipped classrooms (up to 65 in summer), three Internet rooms with 50 PCs, free Internet access and Wi-Fi, as well as a central location, the Academy of Languages provides everything you need for an exceptional learning experience in Heidelberg.

Several halls of residence (approx. 320 rooms), a boarding school, apartments, a school-owned hotel and a number of host families, offer year-round **accommodation** to learners from all over the world.

Specialising in German as a foreign language, the Academy of Languages is one of the world's leading providers of German courses, whether in intensive lessons in the mornings and afternoons, extra-occupational evening courses or individual training. We also offer online lessons so that learners who are unable to join classes in person still have the opportunity to improve their language skills.

As an **international test centre**, the Academy of Languages stands for competence in carrying out internationally recognised exams. Alongside the best-known assessments such as TOEFL®, IELTS (International English Language Testing System) and TestDaF (Test Deutsch als Fremdsprache), the language school offers the following examinations: telc (The European Language Certificates, including C1 Hochschule, Zertifikat Deutsch, Zertifikat Deutsch für den Beruf), TOEIC®, TestAS (aptitude assessment for international university applicants), WiDaF (Test Deutsch in der Wirtschaft) and OnSET (online placement test for German and English). As of 2021 we also offer the ECL exams (European Consortium for the Certificate of Attainment in Modern Languages).

The ECL and telc certificates are accredited by ALTE (Association of Language Testers in Europe) and are therefore accepted by the German Embassy for visa applications.

The **intensive and evening courses** are offered throughout the year. Popular among international university applicants and learners with an interest in language and culture, the courses are also attended by employees of international companies and research institutes such as SAP, Lufthansa, Heidelberger Druckmaschinen, HeidelbergCement, Siemens, Daimler, NEC, Heipha, Brunel, BASF, EMBL, HITS, the DKFZ, Heidelberg University and many more businesses and scientific institutes. International sports stars from the region's well-known sports clubs, including 1899 Hoffenheim, Rhein-Neckar-Löwen, USC Heidelberg and SV Sandhausen, also participate in the Academy's German courses.

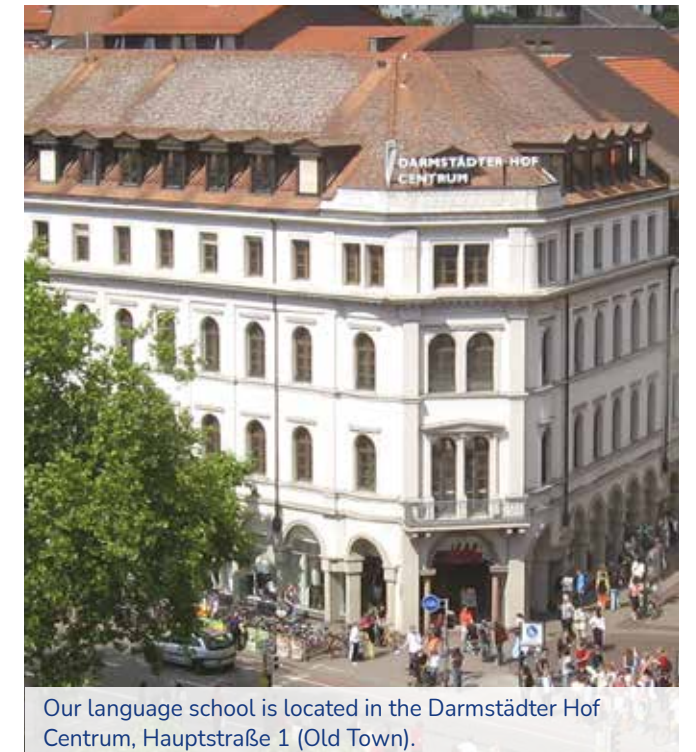
The innovative **hybrid lesson** gives learners access to a completely new, future-orientated form of language teaching. With this type of course, learners have the opportunity to switch flexibly between in-person and online training at any time according to their individual needs. In the virtual classroom and in the in-person courses, learners are taught by experienced and highly qualified trainers. The Academy of Languages tailors the course times and content to the needs of learners, whether in individual training or in groups.

The state-recognised **Vocational College of Foreign Languages** is an outstanding feature of the Language Academy. The college offers full-time programmes leading to the following qualifications: *Fremdsprachenkorrespondent*in* (Foreign Language Correspondence Clerk), *Europasekretär*in* (European Secretary), *Welthandelskorrespondent*in* (Multilingual Correspondence Clerk) and *Übersetzer*in* (Translator). The Academy of Languages is the only education provider in southern Germany to offer state-recognised vocational language training for Japanese. Accreditation has also been awarded for Chinese, English, French, Spanish and Russian.

The Academy of Languages offers internship programmes within the Erasmus+ framework. This EU programme gives young people the chance to participate in a language course in Heidelberg, and to then complete a workplace-based internship.

Why F+U? Top features at a glance

- **Extensive educational competence:** F+U operates a university of applied sciences (VICTORIA), international universities of cooperative education (iba, ISBA), bilingual schools (primary school, Gymnasium), a Realschule secondary school, vocational Gymnasium secondary schools and a number of technical colleges specialising in vocational and foreign language training. Since September 2017, F+U has offered the International Baccalaureate® diploma programme and IB® prep class, providing English-language secondary education for international pupils.
- **International boarding school:** Accommodation for long-term pupils aged 14 and over.
- A dedicated **24/7 telephone service**.
- **Test centre** for TOEFL®, IELTS, TestDaF, telc, ECL, TestAS, TOEIC®, onSET and other exams and tests.
- **State-recognised Vocational College of Foreign Languages.**
- **Affiliations and partnerships:** FaDaF (Fachschaft Deutsch als Fremdsprache); FDSV (German Association of Language Schools and Language Tour Operators), VDP (Federal Association of Private Schools in Germany); EALTA (European Association for Language Testing and Assessment); AOK (Allgemeine Ortskrankenkasse); Eurhodip (European Hotel Diploma); DRV (German Travel Association); Olympiastützpunkt Rhein-Neckar e.V. (Olympic Training Centre); German Youth Hostel Association.
- Year-round **guaranteed provision** for all language courses (see detailed information on page 15).
- **Large selection of rooms** in our own halls of residence, in apartments, with host families and in F+U's Bayrischer Hof hotel.
- **International atmosphere** (learners from 115 countries in 2019).
- **Central location** in one of Germany's most beautiful cities.
- **Great value for money.**



Awards



Cultural programme at the Academy of Languages – highlights in 2023



See also our standard programme on page 30.

21.01	Black Forest (snow) hiking
Mid-February	Hallia Venezia Schwäbisch Hall
25.03	Rothenburg o.d. Tauber
22.04	Strasbourg
20.05	Schwetzingen palace:
17.06	Ladenburg Roman town
08.07, 22.07, 12.08	Neckar forts trip
19.08	Europapark Rust
09.09	Bad Dürkheimer sausage market
14.10	Goethe and shopping in Frankfurt
11.11	Technical Museum Sinsheim
09.12	Nuremberg Christmas market



Heidelberg Christmas market on Market Square



Philosophers' garden above the Neckar (view of the castle and Neckar)

We also recommend visiting these events in our Rhine-Neckar metropolitan region



March - April	Heidelberg spring festival
April - May	Heidelberg 'Stückemarkt' drama festival
April - May	Schwetzingen palace festival
April - May	Alternative spring festival
June, July, September	Castle illuminations with fireworks on the Old Bridge
June	Heidelberg literature festival
June	International Schiller festival, Mannheim
June - July	Heidelberg castle concert festival
July	Mannheim summer festival
July - August	International street theatre festival, Ludwigshafen
July	Nibelungen concert festival, Worms
August - September	Festival of German film
September	Autumn literature festival, Heidelberg
Late September	Heidelberg autumn festival
October	French week
October - November	Enjoy Jazz, international festival of Jazz, Heidelberg
October - November	Heidelberg theatre festival
October - December	Ludwigshafen festival
December	Heidelberg Christmas market

Subject to changes.



Grosse Mantelgasse with a view of the Old University



Castle illuminations with fireworks on the Old Bridge



Heidelberg castle is one of the most famous sights in Germany.

Course levels

Common European Framework of Reference for Languages (CEFR)

CEFR levels	TH per level	Language certificates			Course duration (one course level)
		English	German	CH, FR, IT, JP, RU, SP	
A1	160	English A1, TOEIC® 10-120 ¹	Start Deutsch 1	Français A1, Italiano A1, Russian A1, Diploma de Español A1	One course level consists of 160 TH, which – regardless of the intensity of the course booked – can be completed in six to eight weeks, on condition of regular attendance and intensive follow-up of course content. For individual lessons the total number of hours required to complete a course level is reduced by ca. 50%.
A2	160	English A2, TOEIC® 120-225 ¹	Start Deutsch 2, ECL	Français A2, Italiano A2, Russian A2, Diploma de Español A2	
B1	160	English B1, B1 Business, TOEIC® 226-550 ¹ , TOEFL® 57-86, Translator	Zertifikat Deutsch, Deutsch-Test für Zuwanderer, ECL	FSK ² (CH, JP, RU) Français B1, Italiano B1, Russisch B1, Diploma de Español Inicial B1	
B2	160	English B2, B2 Business, TOEIC® 551-785 ¹ , TOEFL® 87-109	Deutsch B2, B2 Beruf, B1/B2 Pflege, TestDaF 3 (B2.1-B2.2), DSH 1, ECL	FSK ² (FR +SP) Français B2, Italiano B2, Russisch B2, Diploma de Español Intermedio B2	
C1	160	FSK ² English C1, TOEIC® 786-945 ¹ , TOEFL® 110-120	Deutsch C1, C1 Hochschule, C1 Beruf, B2/C1 Medizin, TestDaF 4 (B2.2-C1.1), TestDaF 5 (C1.1-C1.2), DSH 2, ECL	Français C1, Diploma de Español Superior C1	
C2	400	Translator, English C2, TOEIC® 946-990 ¹	DSH 3, Deutsch C2	Translator, Français C2, Diploma de Español Superior C2	

¹The test scores indicated above refer to Listening and Reading competence in the TOEIC® examination.
²FSK: A programme leading to qualification as a state-recognised Foreign Language Correspondence Clerk, European Secretary or Multilingual Correspondence Clerk (Fremdsprachenkorrespondent*in, Europasekretär*in, Welthandelskorrespondent*in).

A1

Beginner

B1

Intermediate

C1

Advanced

A2

Elementary

B2

Upper intermediate

C2

Proficiency

CEFR Levels	Listening	Reading	Speaking	Writing
A1	Can understand simple sentences.	Can understand simple sentences.	Can communicate in short phrases.	Can produce short, simple postcards.
A2	Can understand the overall meaning of short, simple, clear messages.	Can read short, simple texts, e.g. personal correspondence.	Can communicate in sentences in everyday situations.	Can produce short, simple notes, messages and personal letters.
B1	Can understand important information regarding work, free time, etc.	Can comprehend text written in everyday language.	Can participate in conversations about family, hobbies and work.	Can produce simple, connected text on familiar themes.
B2	Can follow lengthy statements and most TV programmes.	Can understand newspaper articles and literary prose.	Can communicate fluently and spontaneously.	Can produce detailed texts and effectively present an argument.
C1	Can understand lengthy statements and TV programmes without great effort.	Can comprehend complex and literary texts.	Can express thoughts fluently, spontaneously and precisely.	Can produce clear, well-structured texts on complex subjects.
C2	Can understand complex language with ease, also when spoken quickly.	Can comprehend any text with ease.	Can participate effortlessly in all conversations and discussions.	Can produce and discuss sophisticated and complex texts.

International test centre

Exam	Language(s)	Description	Dates 2023	Fees ¹
TestDaF Test Deutsch als Fremdsprache	German	Required for enrolment at German universities (equivalent to DSH).	Digital: 14.02, 11.04, 13.06 From July: further dates on request Paper-based: 09.03, 11.05, 11.10	€ 195
ECL A2-C1	German	When issuing a visa, embassies recognise the certificate as proof of language proficiency.	04.02, 10.06, 16.08, 30.09, 25.11	€ 160
telc The European Language Certificates	German, English, Russian, (more languages on request)	Certificate of foreign language skills. A1-A2, B1, B2, B1/B2/C1 + Beruf.	Dates on request	From € 160
telc A1-C2 C1 Hochschule	German	Certificate of foreign language skills. Deutsch C1 Hochschule is equivalent to DSH and TestDaF.	14.01, 04.02, 11.03, 01.04, 13.05, 10.06, 08.07, 05.08, 30.09, 14.10, 25.11, 02.12	€ 160
telc B1/B2 Pflege B2/C1 Medizin	German	Certificate of specialist language competence required by qualification recognition authorities and medical institutes.	Dates on request	From € 160
DTZ Deutsch Test für Zuwanderer	German	This test certifies your language skills from A2-B1. It is accepted by authorities as a requirement for settled status.	Dates on request	€ 100
Deutsch Test für den Beruf A2-C1 (DTB)	German	Final exam for the DeuFöV-courses. With this exam, you demonstrate your language skills for the workplace.	Dates on request	€ 100
TestAS Test for Academic Studies	German or English	Aptitude test for international students entering higher education; not yet obligatory.	Digital: 15.03, 03.06, 30.11 Paper-based: 23.02, 22.04, 21.10	€ 135
onSET	German or English	Internet test (A2-C1), Results available on demand, worldwide.	Dates on request	€ 22.50 (minimum of 3 participants)

¹Status July 2022.



International test centre

Exam	Language(s)	Description	Dates 2023	Fees ¹
Test WiDaF® Test Deutsch als Fremdsprache in der Wirtschaft	German	Standardised, business-focused test of German (A2-C2).	Dates on request	€ 180
TOEFL iBT® Test of English as a Foreign Language	English	Evidence of language competence for admission to higher education, especially BA, MA, B.Sc, B.Eng, M.Sc, MBA programmes.	Dates unknown at the time of publication.	US\$ 245
TOEFL Junior®	English	Assessment and certification of school pupils' English competence; admission requirement for some school exchange programmes.	Dates on request	€ 180
TOEIC® Test Of English for International Communication	English	The world's most popular test of English for business purposes.	Listening & Reading and Speaking & Writing: Dates on request	€ 180 each part (minimum of 3 participants)
IELTS – International English Language Testing System	English	Certificate of English language skills required for higher education, migration and employment.	Dates on request	€ 226
Foreign Language Correspondence Clerk	German as a foreign language, English, Spanish, French, Japanese, Chinese, Russian and more	State recognition for Chinese, English, French, Japanese, Russian and Spanish. Recognition for German as a foreign language has been applied for. Examinations are available for other languages, for example the examinations offered by the IHK. Further information on request.	Course start: 11.09.2023	€ 150 per language, € 150 for the secretarial examination
European Secretary	English, Spanish, French			
Multilingual Correspondence Clerk	English, Spanish, French + Japanese, Russian or Chinese			
Translator	English, Spanish, French and more			
School's in-house examination	German, English	a) F+U learners: 75 € b) External learners: 115 € (incl. registration fee).		

¹Status July 2022.





The Heiligenberg tower is an observation tower on the right bank of the Neckar, not far from St Stephen's monastery and the Thingstätte.

General information

- **Registration fee (first-time participation only):** €50 (2 people: €30 / person; 3 people: €25 / person; 4 or more people: €20 / person).
- **Family discount:** 10% off course fees.
- **Free services:** Placement test, progress tests, use of learner-PCs (three computer rooms with fifty PCs), Wi-Fi, certificate of participation, documentation for authorities, student ID, organisation of language tandems, orientation event.
- **Course material:**
 - **Online courses / online participation:** €50 - €70 per level for e-books.
 - **In-person courses / in-person participation:** €35 - €70 per level for hard copies / printed books.
- The **prices and services** quoted in the brochure are valid until the publication of a new brochure. Errors excepted.
- **Information specified in the German and English versions of the brochure is authoritative.** All other translations are solely for the purpose of orientation in the respective language.
- **Non-profit education provider:** The majority of F+U's services are exempt from Value Added Tax.
- **Course levels:** A1-C2 (unless otherwise stated in the course description).
- **Maximum number of participants:** In-person courses: 15; online courses and hybrid courses: 20.
- **Minimum number of participants:** 6.
- **Guaranteed provision:** If requested by learners, courses are held even without the minimum number of six participants. The number of hours booked is reduced by 25% for three to five learners and 50% for only one or two learners.
- **Regular lesson times:** Monday-Friday: 07.15-20.00; Saturday: 10.00-16.00 (see additional information on page 17).
- **School administration opening hours:** Monday-Friday: 07.30-19.00 (Saturday: 10.00-16.00).
- Our courses are taught by **experienced** and **highly qualified** teachers.
- **One teaching hour (TH) is 45 minutes.**
- **Minimum age:** Group courses: 16 years; junior courses: 6 years (German and English courses).
- **Public holidays (no lessons):** 06.01, 07.04, 10.04, 01.05, 18.05, 29.05, 08.06, 03.10, 01.11, 25.12, 26.12. The missed lesson is taken at the end of the course. For planning reasons, a written request must be submitted no later than 14.30 on the day before.
- **School holiday:** Intensive courses and individual lessons are offered throughout the year. However, learners can request an individual pause in learning. Evening course learners have a break from 25.12.2023 to 01.01.2024 (see also 'Individual holiday').
- **Individual holiday:** Intensive courses and individual lessons are offered throughout the year. Learners can request an individual pause in learning (the booked course is extended by the duration of the confirmed holiday).

- **Intensive courses:** Two weeks (Monday-Friday) holiday per quarter (12 course weeks); requests must be received no later than Thursday, 16.00, before the start of the holiday. The minimum holiday duration is one complete week (Monday-Friday). Please don't forget to extend your accommodation contract where applicable.
- **Evening courses:** Requests must be received no later than 16.00 on the course day.
- **Individual lessons, closed small groups, company training:** Cancellation of the scheduled lesson without charge is possible if written notification is received by 14.00 on the previous working day. Cancellations of Monday lessons must be received no later than 14.00 on the Saturday before.
- **Applications to change the course level or module** must be received by the school administration office by Thursday, 16.00, for the subsequent week.
- **Cancellation of the course** is possible without charge until three weeks before the start of the course, after which the following cancellation charges apply: one week before the start of the course: €100; by Friday, 12:00, before the start of the course: €150; after this notice period but still before the start of the course: the registration fee plus the course fee for two course weeks/course months or, in the case of individual lessons, the course fee for two individual teaching hours.
- **After the start of the course, termination of the course** or a **reduction** in the number of lessons is possible only in cases prescribed by law (see our General Terms and Conditions).
- **Cancellation of accommodation rented from the Academy of Languages** is possible with a notice period of six full weeks and payment of a cancellation fee of €100. (For further regulations see from page 46 and our General Terms and Conditions).
- **International test centre:** You have the opportunity to take internationally recognised tests including TOEFL®, IELTS, TestDaF, telc, ECL, TestAS, TOEIC®, OnSET and more.
- The language courses are designed to **prepare students for university studies or for professional purposes** and lead to the acquisition of an international language diploma.
- The school has **barrier-free** access and an **accessible WC** is also available.

Cultural programme

We organise regular afternoon activities for our learners. The cultural programme includes guided tours of Heidelberg, excursions, sports activities and group game evenings. Advance registration is possible during school office opening hours (see page 30).

Registration fee (first-time participation only): €50 (2 people: €30 / person; 3 people: €25 / person; 4 or more people: €20 / person).
Family discount: 10% off course fees.

We offer you tailor-made solutions for your individual needs and requirements - whether you want to acquire basic knowledge of a language, improve your skills in the specialist language typical of your industry or communicate confidently during your next holiday abroad.
You can choose the form of your language training flexibly, whether in-person lessons at our school, in-house training in your company or live online training worldwide – border-free and at any time.



In-person lessons at our school on Bismarckplatz

With 50 multimedia-equipped classrooms and three Internet rooms with 50 PCs, free Internet access and Wi-Fi and over 100 highly qualified teachers, the Academy of Languages meets all the criteria to deliver effective, successful language lessons. Thanks to our central location at Bismarckplatz, Heidelberg's main public transport hub, we are easily accessible by all means of transport.

Online lessons: live language courses – worldwide, any time

In the virtual classroom our teachers support you in live, interactive lessons. You can arrange to start the course at any time, and we offer flexible course times to suit your needs.
With the support of the latest technology and our experienced teachers, you develop your skills in our standard and specialist language courses.
To participate in the online lesson, you require a stable broadband Internet connection and a computer, laptop or tablet, as well as a camera and headset. Participation with a mobile phone is possible, but due to the teaching methods we recommend that you use a mobile phone to join the course only as a last resort.

In-house training in your company

Do your employees need language courses specific to the industry? Should they be able to communicate confidently on the international stage? We offer you individually designed language training in over 20 languages, such as German, English, Chinese, Japanese, Italian, Spanish and French. The choice is yours!
Individual tuition or small groups: in our language courses, your team receive efficient tuition, whether they are beginners or advanced learners. With an individually designed syllabus, we respond to participants' needs and context of application.



The benefits at a glance

- No registration fee when booking a **trial lesson** (the fee is payable only from the second teaching hour).
- No charge for **lesson cancellation** if written notification is received no later than 14:00 the previous working day (languages@fuu.de).
- The pace and content of the lessons are tailored to your requirements; this guarantees a flexible course structure and interactive atmosphere.
- You can join a free **language tandem** with our German course learners from England, the USA, Japan, China, France, Italy, Russia, Brazil, Spain and several other countries.
- **Languages offered:** Arabic, Brazilian, Bulgarian, Chinese, Croatian, Czech, Dutch, English, French, Georgian, German, Greek, Hungarian, Italian, Japanese, Polish, Portuguese, Romanian, Russian, Serbian, Spanish, Swedish, Turkish, Ukrainian, (more languages on request).

Regular lesson times: Monday-Friday: 07.15-20.00; Saturday: 10.00-16.00.

Additional charges:

- Outside regular lesson times (see above): 25% additional charge.
- Specialist language I: Business I: basics; literature; examination preparation (TestDaF, DSH, ECL); translation training: 15% additional charge.
- Specialist language II: Medicine I: basics; care professions; technology; examination preparation II (IELTS, TOEFL, TOEIC): 25% additional charge.
- Specialist language III: Business II and medicine II: specialisations: 50% additional charge.
- Specialist language IV: Examination preparation III (GMAT, TestAS, Translator IHK): €60 per TH / person (groups on request).

In-house training

- 30% additional charge inside Heidelberg city area (minimum 2 TH per course day). *
 - 50% additional charge outside Heidelberg city area (minimum 3 TH per course day).*
- *plus €0.30 per km from the school to the course location and back.

German, English, Spanish, Italian	1 learner	2 learners	3-7 learners
1-49 TH	€ 32	€ 40	€ 50
From 50 TH	€ 27	€ 35	€ 45
Russian, Polish	1 learner	2 learners	3-7 learners
1-49 TH	€ 35	€ 43	€ 53
From 50 TH	€ 30	€ 38	€ 48
Arabic, Chinese, French, Japanese, Turkish	1 learner	2 learners	3-7 learners
1-49 TH	€ 38	€ 46	€ 56
From 50 TH	€ 33	€ 41	€ 51
All other languages	1 learner	2 learners	3-7 learners
1-49 TH	€ 42	€ 50	€ 60
From 50 TH	€ 37	€ 45	€ 55

The listed prices are per **teaching hour** (TH, 45 minutes).
1 Fees for groups of 8 or more people from page 29.

Language learning, your way: in-person, online or hybrid lessons

Do you want to improve your language skills and get to know one of Germany's most beautiful cities? Then our in-person language courses are perfect for you. Make your language course an all-round unique experience with us in Heidelberg. Our hybrid courses offer you maximum flexibility with the quality you expect. Decide whether you would rather attend your language course online or in person. This is made possible by our hybrid format: online and in-person participants interact in the hybrid courses both with the teacher and with each other thanks to state-of-the-art technology.

Registration fee (first-time participation only): €50 (2 people: €30 / person; 3 people: €25 / person; 4 or more people: €20 / person).
Online courses / online participation: €50 - €70 per level for e-books; in-person courses / in-person participation: €35 - €70 per level for hard copies / printed books.
Family discount: 10% off course fees. **Individual lessons** (standard German) in addition to group lesson: €25 / 45 minutes.
Course levels: A1-C2 (unless otherwise stated in the course description).
Maximum number of participants: In-person courses: 15; online and hybrid courses: 20. **Minimum number of participants:** 6.
Guaranteed provision: If requested by learners, courses are held even without the minimum number of six participants. The number of hours booked is reduced by 25% for three to five learners and 50% for only one or two learners.



Our classic courses

Course start: Nr. 1-8: All levels except beginners: Every Monday throughout the year. **Beginners:** 09.01, 06.02, 06.03, 03.04, 08.05, 05.06, 03.07, 17.07, 07.08, 21.08, 04.09, 02.10, 06.11, 04.12. **No. 9-11:** On request.

No.	Course name	Lesson format	Description	TH / week	Course times Monday-Friday	Flexible course duration (course fees per week, discounts only with advance payment)			
						1-4 wks	5-15 wks	16-23 wks	From 24 wks
1	Intensive course 20	Online	Standard German	20	09:00-12:15	€ 95	€ 90	€ 80	€ 75
2	Intensive course 20	In person	Standard German, optional exam prep from C1 or Business German from B2	20	09:00-12:15	€ 190	€ 170	€ 145	€ 135
3	Premium course 30	In person	Standard German, optional exam prep from C1	30	09:00-12:15 13:00-14:30	€ 245	€ 225	€ 195	€ 185
4	Intensive course 20 + Module course 10	In person	Standard German, optional combination with exam prep	20 + 10	09:00-12:15 13:00-14:30	€ 245	€ 225	€ 195	€ 185
5	Intensive course 20 + Module course 10	Online		20 + 10	09:00-12:15 13:00-14:30	€ 245	€ 225	€ 195	€ 185
6	Super-intensive course 40	In person	Standard German, optional exam prep from C1 or Business German / job application training from B2	40	08:00-08:45 09:00-12:15 13:00-14:30 14:45-15:30	€ 320	-	-	-
7	Module course 10	Hybrid	Consolidation course: Standard German	10	13:00-14:30	€ 95	€ 90	€ 80	€ 75
8	Module course 10	Hybrid	Consolidation course: Preparation for TestDaF, telc C1 Hochschule or DSH	10	13:00-14:30	€ 95	€ 90	€ 80	€ 75
9	TestDaF 15	Online	Preparation for TestDaF	15	13:00-15:30	€ 95	€ 90	-	-
10	Intensive course 15		Standard German from B1 level	15	13:00-15:30	€ 95	€ 90	-	-
11	Intensive course 30	Online	Sommerkurs auf den Niveaustufen ab B1	30	09:00-12:15 13:00-14:30	€ 145	€ 140	-	-

Intensive course 20 (no. 2)

Language course A1 level 8 weeks € 1,360	Language course A2 level 16 weeks € 2,320	Language course B1 level 24 weeks € 3,240	Language course B2 level 32 weeks € 4,320	Language course C1 level 40 weeks € 5,400
---	--	--	--	--

Intensive course 20 (no. 2) + accommodation

Language course + residence A A1 level 8 weeks € 2,520	Language course + residence A A2 level 16 weeks € 4,400	Language course + residence A B1 level 24 weeks € 6,120	Language course + residence A B2 level 32 weeks € 8,160	Language course + residence A C1 level 40 weeks € 10,200
Language course + residence D/E A1 level 8 weeks € 3,560	Language course + residence D/E A2 level 16 weeks € 5,760	Language course + residence D/E B1 level 24 weeks € 8,280	Language course + residence D/E B2 level 32 weeks € 11,040	Language course + residence D/E C1 level 40 weeks € 13,800
Language course + host family A (HB) A1 level 8 weeks € 3,480	Language course + host family A (HB) A2 level 16 weeks € 6,400	Language course + host family A (HB) B1 level 24 weeks € 9,360	Language course + host family A (HB) B2 level 32 weeks € 12,480	Language course + host family A (HB) C1 level 40 weeks € 15,600

Please note that a one-time €50 registration fee is charged for our language courses.
Please note that bookings for our hall of residence or host family accommodation are subject to an administration fee of €95 as well as a refundable deposit of €150 (from 12 weeks: €400).
Information about our language courses' alignment to the Common European Framework of Reference for Languages can be found on page 11.
Please see from page 40 for accommodation information.

Top offers for university applicants

If you have a place offer from one of our universities of cooperative education (iba and ISBA) or our VICTORIA | university of applied sciences, you will receive a subsequent 25% refund of language course fees after successful enrolment.

Hybrid lesson

Combining in-person and live online training (see also the description on page 18).



Intensive course 30 (no. 3, 4, 5)

Language course A1 level 6 weeks € 1,350	Language course A2 level 12 weeks € 2,700	Language course B1 level 18 weeks € 3,510	Language course B2 level 24 weeks € 4,400	Language course C1 level 30 weeks € 5,550
---	--	--	--	--

Please note that a one-time €50 registration fee is charged for our language courses.
Information about our language courses' alignment to the Common European Framework of Reference for Languages can be found on page 11.

Intensive course 30 (no. 3, 4, 5) + accommodation

Language course + residence A A1 level 6 weeks € 2,220	Language course + residence A A2 level 12 weeks € 4,440	Language course + residence A B1 level 18 weeks € 5,850	Language course + residence A B2 level 24 weeks € 7,320	Language course + residence A C1 level 30 weeks € 9,150
Language course + residence D/E A1 level 6 weeks € 3,000	Language course + residence D/E A2 level 12 weeks € 6,000	Language course + residence D/E B1 level 18 weeks € 7,380	Language course + residence D/E B2 level 24 weeks € 9,480	Language course + residence D/E C1 level 30 weeks € 11,850
Language course + host family A (HB) A1 level 6 weeks € 2,940	Language course + host family A (HB) A2 level 12 weeks € 5,880	Language course + host family A (HB) B1 level 18 weeks € 8,100	Language course + host family A (HB) B2 level 24 weeks € 10,560	Language course + host family A (HB) C1 level 30 weeks € 13,200

Please note that a one-time €50 registration fee is charged for our language courses.
Please note that bookings for our hall of residence or host family accommodation are subject to an administration fee of €95 as well as a refundable deposit of €150 (from 12 weeks: €400).
Information about our language courses' alignment to the Common European Framework of Reference for Languages can be found on page 11.
Please see from page 40 for accommodation information.

Special courses

Course start: No. 12-16 and 22: 09.01, 06.02, 06.03, 03.04, 08.05, 05.06, 03.07, 07.08, 04.09, 02.10, 06.11, 04.12.
No. 17-21: On request.

No.	Course	Lesson format	Description	TH / week	Course times Monday-Friday	Flexible course duration (course fees per week)		
						1-4 wks	5-15 wks	From 16 wks
12	Business correspondence I	In person	Business communication	5	08:00-08:45	€ 60	€ 55	€ 50
13	Education voucher I Part-time course ¹		Standard German in combination with specialist Business language	25	08:00-08:45 09:00-12:15	Die Kurse werden von der Bundesagentur für Arbeit gefördert.		
14	Education voucher II Full-time course ¹			40	08:00-08:45 09:00-12:15 13:00-14:30 14:45-15:30			
15	Educational leave 30 ²		Standard German	30	09:00-12:15 13:00-14:30	€ 275	-	-
16	Educational leave 40 ²			40	08:00-08:45 09:00-12:15 13:00-14:30 14:45-15:30	€ 325	-	-
17	Medical German ³ or German for care professions ⁴		Open group, from B2	20	09:00-12:15	€ 295	-	-
18			Closed group max. 12 learners, from B1	Course time, duration and intensity by arrangement		€ 80 per TH		
19	Professional development seminar for German teachers	Hybrid	Methods and didactical instruction supplemented by lesson observation ⁵	20 + 20	13:00-16:15 (+ observation 09:00-12:15)	€ 295	-	-
20	TestAS preparation		Block seminar	10	14:45-16:15	€ 485 (duration: 4 weeks)		
21	Business correspondence II / Job application training	In person	Consolidation course: Business communication	5	14:45-15:30	€ 60	€ 55	€ 50
22	Homework supervision		Consolidation course: Standard German	5	15:00-15:45	Free		
38	Junior programme		Detailed information from page 32.					

¹Courses are certified according to the Accreditation and Licensing Ordinance - Employment Promotion (Akkreditierungs- und Zulassungsverordnung - Arbeitsförderung - AZAV); duration 4 or 8 weeks.
²The courses are recognised according to the educational leave laws of the states of Baden-Württemberg, Hesse and Rhineland-Palatinate; duration 1 or 2 weeks.
³In order to obtain recognition of your licence to practise medicine in Germany, you must successfully pass the B2 general language exam and the C1 medical language exam. Alongside medical terminology, error-free communication with patients in German is essential. Duration: 4 weeks.
⁴German language for nursing, vocational preparatory training and to accompany training or employment; for routine nursing in a nursing home, hospital or in outpatient care. Duration and intensity by arrangement.
⁵Teaching observation only with participation in an in-person course, duration: 4 weeks.



Course start: All levels except beginners: Every Monday throughout the year.
New A0 evening course for **complete beginners** starts once a quarter: 06.02; 08.05; 07.08; 06.11.

No.	Course	Lesson format	Description	TH / week	Course days 18:30-20:00	Flexible course duration course fees per week		
						1-4 wks	5-15 wks	From 16 wks
23	Main course	Hybrid	Standard German	4	Mon + Thurs	€ 35	€ 30	€ 25
24	Main course plus Module course		Combination of Main course with the Grammar / conversation consolidation module	6	Mon + Wed + Thurs	€ 50	€ 45	€ 40
25	Module course		Consolidation course	2	Wed	€ 25	€ 22	€ 18

Individual lesson (standard German) in addition to group lesson: €25 / 45 minutes.

Combination course German plus English

Registration fee (first-time participation only): €50 (2 people: €30 / person; 3 people: €25 / person; 4 or more people: €20 / person).
Course material:
- **Online courses / online participation:** €50 - €70 per level for e-books; in-person courses.
- **In-person participation:** €35 - €70 per level for hard copies / printed books.
Family discount: 10% off course fees.
Individual lessons (standard German) in addition to group lesson: €25 / 45 minutes.
Course levels: A1-C2 (unless otherwise stated in the course description).
Maximum number of participants: In-person courses: 15; online and hybrid courses: 20.
Minimum number of participants: 6.
Guaranteed provision: If requested by learners, courses are held even without the minimum number of six participants. The number of hours booked is reduced by 25% for three to five learners and 50% for only one or two learners.
Course start: All levels except beginners: Every Monday throughout the year.
Beginners: 09.01, 06.03, 03.04, 08.05, 05.06, 03.07, 07.08, 04.09, 02.10, 04.12 (further dates on request).

No.	Course	Lesson format	TH / week	Course days	Course times	Flexible course duration course fees per week		
						1-4 wks	5-15 wks	From 16 wks
26	Intensive course 20 (German) plus Module course 10 (English)	In person	20 + 10	Monday to Friday	09:00-12:15 13:00-14:30	€ 245	€ 225	€ 195
27	Intensive course 20 (English) plus Module course 10 (German)		20 + 10		09:00-12:15 13:00-14:30	€ 245	€ 225	€ 195

Learners’ home countries: German courses, 1st half of 2022 (approx. 2,750 learners)

Countries	Share	Countries	Share	Countries	Share	Countries	Share
Turkey	9.40%	Switzerland	4.60%	Poland	2.70%	Russian Federation	1.50%
Mexico	8.20%	Ukraine	4.50%	Brazil	2.20%	South Korea	1.50%
Italy	8.10%	People’s Republic of China	4.20%	USA	2.10%	Syria	1.20%
Tunesia	6.90%	Spain	3.50%	Colombia	1.80%	Iran	1.10%
Japan	6.50%	Panama	3.50%	Ecuador	1.70%	India	0.80%
Israel	5.10%	France	2.90%	Cyprus	1.60%	53 more countries	14.40%
Total							100%



Registration fee (first-time participation only): €50 (2 people: €30 / person; 3 people: €25 / person; 4 or more people: €20 / person).
Course material: Online courses / online participation: €50 - €70 per level for e-books; in-person courses / in-person participation: €35 - €70 per level for hard copies / printed books.
Family discount: 10% off course fees.
Individual lessons (standard English) in addition to group lesson: €25 / 45 minutes.
Course levels: A1-C2 (unless otherwise stated in the course description).
Maximum number of participants: In-person courses: 15; online and hybrid courses: 20. Minimum number of participants: 6.
Guaranteed provision: If requested by learners, courses are held even without the minimum number of six participants. The number of hours booked is reduced by 25% for three to five learners and by 50% for only one or two learners.

Test centre

TestDaF
Test Deutsch als Fremdsprache

TestAS
Test für Ausländische Studierende

onSET
Online-SprachEinstufungstest

TOEIC®
TOEFL®

BRITISH COUNCIL
IELTS
Testing Here

telc
LANGUAGE TESTS
ECL

Our classic courses

Course start: All levels except beginners: Every Monday throughout the year.
Beginners: 09.01, 06.03, 03.04, 08.05, 05.06, 03.07, 07.08, 04.09, 02.10, 04.12 (further dates on request).

No.	Course name	Lesson format	Description	TH / wk	Course times Monday-Friday	Course fees per week			
						1-4 wks	5-15 wks	16-23 wks	From 24 wks
28	Intensive course 20	In person	Standard English, optional Business English / job application training from B2 level	20	09:00-12:15	€ 190	€ 170	€ 145	€ 135
29a	Intensive course 20 + Module course 10			20 + 10	09:00-12:15 13:00-14:30	€ 245	€ 225	€ 195	€ 185
30	Super-intensive course 40			40	08:00-08:45 09:00-12:15 13:00-14:30 14:45-15:30	€ 320	-	-	-
29b	Module course 10		Consolidation course	10	13:00-14:30	€ 110	€ 100	€ 95	-

Special courses

Course start: 09.01, 06.03, 03.04, 08.05, 05.06, 03.07, 07.08, 04.09, 02.10, 04.12 (further dates on request).

No.	Course name	Lesson format	Description	TH / wk	Course times Monday-Friday	Course fees per week		
						1-4 wks	5-15 wks	From 16 wks
29c	Business correspondence I	In person	Business communication	5	08:00-08:45	€ 60	€ 55	€ 50
30a	Education voucher I Part-time course ¹		Standard English combines with specialist Business English	25	08:00-08:45 09:00-12:15	These courses are funded by the Bundesagentur für Arbeit (Federal Employment Agency).		
30b	Education voucher II Full-time course ¹			40	08:00-08:45 09:00-12:15 13:00-14:30 14:45-15:30			
31	Educational leave 30 ²		Standard English	30	09:00-12:15 13:00-14:30	€ 275	-	-
32	Educational leave 40 ²			40	08:00-08:45 09:00-12:15 13:00-14:30 14:45-15:30	€ 325	-	-
33	Business correspondence II / Job application training		Consolidation course: Business communication	5	14:45-15:30	€ 60	€ 55	€ 50
39	Junior programme		Detailed information from page 32.					

¹ Courses are certified according to the Accreditation and Licensing Ordinance – Employment Promotion (Akkreditierungs- und Zulassungsverordnung – Arbeitsförderung – AZAV); duration 4 or 8 weeks.

² The courses are recognised according to the educational leave laws of the states of Baden-Württemberg, Hesse and Rhineland-Palatinate; duration 1 or 2 weeks.



Intensive course (no. 28)

Language course
A1 level
8 weeks
€ 1,360

Language course
A2 level
16 weeks
€ 2,320

Language course
B1 level
24 weeks
€ 3,240

Language course
B2 level
32 weeks
€ 4,320

Language course
C1 level
40 weeks
€ 5,400

Intensive course 30 (no. 29)

Language course
A1 level
6 weeks
€ 1,350

Language course
A2 level
12 weeks
€ 2,700

Language course
B1 level
18 weeks
€ 3,510

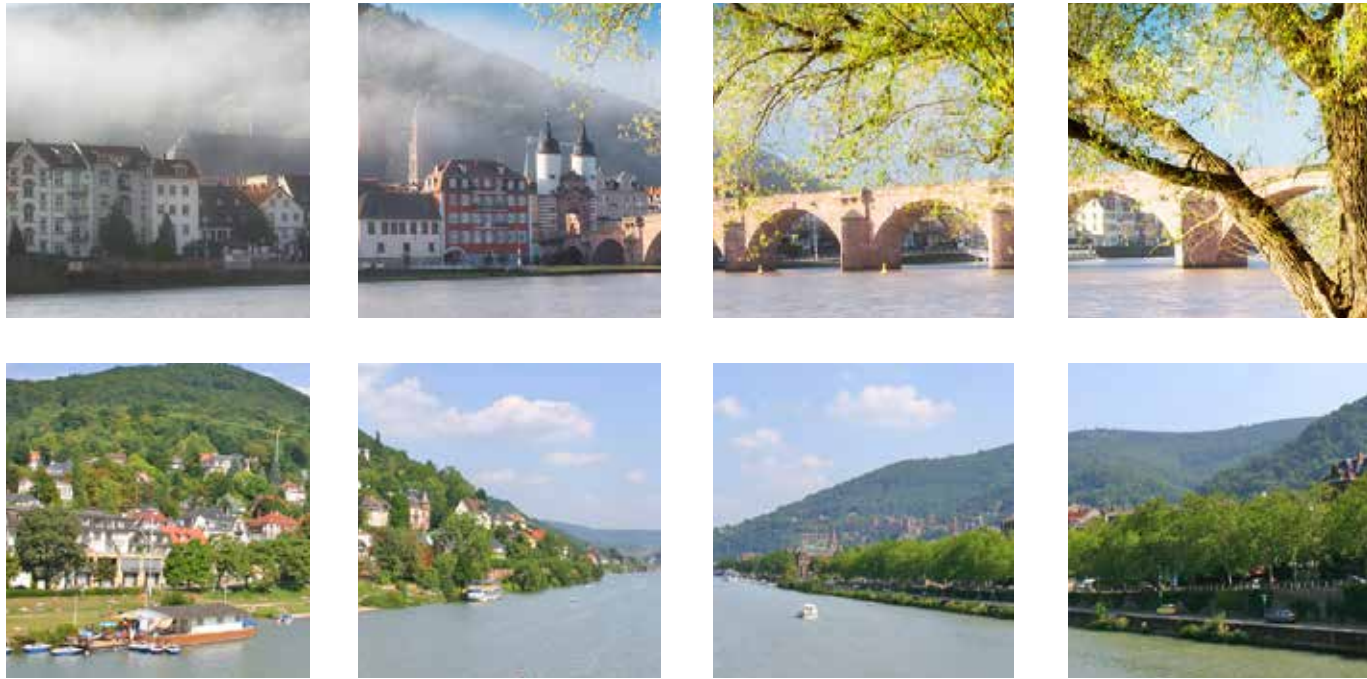
Language course
B2 level
24 weeks
€ 4,440

Language course
C1 level
30 weeks
€ 5,550

Please note that a one-time €50 registration fee is charged for our language courses.
Information about our language courses' alignment to the Common European Framework of Reference for Languages can be found on page 11.
Please see from page 40 for accommodation information.

Top offers for university applicants

If you have a place offer from one of our universities of cooperative education (iba and ISBA) or our VICTORIA | university of applied sciences, you will receive a subsequent 25% refund of language course fees after successful enrolment.



Learners’ home countries: English courses, 1st half of 2022 (approx. 495 learners)

Countries	Share	Countries	Share	Countries	Share	Countries	Share
Germany	36.90%	Colombia	2.90%	France	2.10%	Syria	1.60%
Japan	9.80%	Ukraine	2.90%	Hungary	1.90%	Russian Federation	1.50%
Turkey	7.80%	Saudi Arabia	2.80%	Brazil	1.80%	Iran	1.40%
Panama	6.50%	Spain	2.50%	Ecuador	1.80%	South Korea	1.20%
Georgia	3.50%	Switzerland	2.50%	Chile	1.80%		
Italy	3.10%	Poland	2.10%	People’s Republic of China	1.60%	Total	100%



Heidelberg Old Bridge, Brückentor (Bridge Gate)

Registration fee (first-time participation only): €50 (2 people: €30 / person; 3 people: €25 / person; 4 or more people: €20 / person).
Course material: Online courses / online participation: €35 - €60 per level for hard copies / printed books.
Family discount: 10% off course fees.
Individual lessons (standard English) in addition to group lesson: €25 / 45 minutes.
Maximum number of participants: In-person courses: 15; online and hybrid courses: 20.
Minimum number of participants: 6.
Guaranteed provision: If requested by learners, courses are held even without the minimum number of six participants. The number of hours booked is reduced by 25% for three to five learners and 50% for only one or two learners.
Course start German: All levels except beginner: Every Monday throughout the year.
Beginners: 09.01, 06.02, 06.03, 03.04, 08.05, 05.06, 03.07, 17.07, 07.08, 21.08, 04.09, 02.10, 06.11, 04.12.
Course start English: All levels except beginner: Every Monday throughout the year.
Beginners: 09.01, 06.03, 03.04, 08.05, 05.06, 03.07, 07.08, 04.09, 02.10, 04.12 (further dates on request).
Course start French, Italian and Spanish (levels A2+B1): 07.08 (further dates and levels on request).

No.	Language	Lesson format	Federal state recognition	TH / week	Course days	Course times	Fees per week
12	German as a foreign language	In person The possibility of online participation is under review.	Baden-Württemberg, Hesse, Rhineland-Palatinate Status: August 2021	30	Monday to Friday	09:00-12:15 13:00-14:30	€ 275
13	German as a foreign language			40		08:00-08:45 09:00-12:15 13:00-14:30 14:45-15:30	€ 325
31	English			30		09:00-12:15 13:00-14:30	€ 275
32	English			40		08:00-08:45 09:00-12:15 13:00-14:30 14:45-15:30	€ 325
36	French, Spanish, Italian			30		09:00-12:15 13:00-14:30	€ 430
37	French, Spanish, Italian			40		09:00-12:15 13:00-14:30 15:00-16:30	€ 570



German and English courses

Throughout the year we offer packages for class trips and groups of eight* or more people. The packages are designed for learners who want to improve their foreign language skills together while experiencing German culture in one of the country's most beautiful cities. Lessons can be held in international groups or as closed groups (minimum 15 people). Our diverse cultural programme offers plenty of variety, and can be tailored in advance to meet the special interests of the group participants. To round off the perfect language trip, you can book accommodation, with or without meals, in our halls of residence or with host families and a range of transfer options.
*Group offers for up to seven people: see page 17.
Free offers for group leaders (per 15 participants)
Language course: German (English on request).
Accommodation: A room in one of our halls of residence (host family and hotel accommodation is only available at list price).

General information
Administration fee per group: €195.
Includes: Placement tests, progress tests, certificate of participation, use of the school library, reading room and computer workstations, Wi-Fi.
Course material: €25 per participant, per week. Placement in existing international groups is possible.

Language(s)	TH / week	Course times (Mon - Fri)	Fees per week and per person		
			8-14 people*	15-24 people	From 25 people
German	20	09:00-12:15	€ 150	€ 140	€ 130
German	30	09:00-12:15 13:00-14:30	€ 195	€ 180	€ 170
English	20	09:00-12:15	€ 150	€ 140	€ 130
English	30	09:00-12:15 13:00-14:30	€ 195	€ 180	€ 170
German main course and English module course	20 + 10	09:00-12:15 (G) 13:00-14:30 (E)	€ 195	€ 180	€ 170
English main course and German module course	20 + 10	09:00-12:15 (E) 13:00-14:30 (G)	€ 195	€ 180	€ 170

*Group offers for up to seven people: see page 17.

Accommodation and meals

Accommodation type (double room) ¹	Shower/ WC	Kitchen	Meals	Fees per week and per person
Residence category A or B ^{2, 3}	On corridor		Room only (see below ³)	€ 130
Residence category E ^{2, 3}	In room			€ 220
Host family category A, B	Shared with the family		Half board	€ 270
Hotel (single room: 60 % supplement)	In room	No	See note ³	€ 695
Youth hostel (dormitory from 4 people)	In room	No	Half board	€ 420

¹Single rooms can be booked for an additional charge. We will be happy to provide a quote.
²For accommodation categories, see from page 40.
³Meals in partner restaurants close to the school: breakfast: €50; lunch: €125; evening meal: €150 (per week and person; a soft drink or a cup of tea or coffee is included with each meal).
You can also have a meal (approx €7) in the Mensa (refectory) of Heidelberg University, just a ten-minute walk from the school.
Groups are responsible for arranging their own meals during excursions.

Transfer

We will happily provide a quote for a transfer from the airport or station to your accommodation. For individual journeys, see page 45.

Cultural programme

See also our highlights on page 8.

Activity	Duration	Partici- pants	Fee per person / activity
Orientation tour of Heidelberg's Old Town	Approx. 2 hours	From 8	€ 15
Walks (Heiligenberg, Philosophers' Walk, Heidelberg Castle gardens and more)	Approx. 3 hours		
Sports activities (by the Neckar or in the school's own sports hall)	Approx. 3 hours		
Regular 'Stammtisch' get-togethers	Approx. 2 hours		
Japanese seminar followed by social event (drinks not included)	Approx. 2 hours		€ 20
Barbecue party on the Neckar (food and drinks included)	Approx. 2 hours		€ 25
Museum visits (German Apothecary Museum and others in Heidelberg)	Approx. 2 hours		€ 25
Boat trip on the Neckar: Heidelberg area	Approx. 1 hour		€ 35
Welcome party (food and drinks included)	Approx. 2 hours	From 12	€ 35
Museum visits (Technoseum, Kunsthalle Mannheim gallery, planetarium and more in Mannheim)	Approx. 4 hours		€ 40
Excursions (half day) ¹	Approx. 5 hours		€ 85
Excursions (full day) A ²	Approx. 8 hours		€ 105
Excursions (full day) B ³	Approx. 8 hours		€ 145

¹Schwetzingen palace, boat trip to Neckarsteinach (town with four forts), Ladenburg (incl. admission).
²Frankfurt am Main, Rüdesheim am Rhein, Stuttgart (Mercedes Benz or Porsche Museum; incl. admission), Black Forest (e.g. Triberg waterfalls, Cuckoo-Clock-Museum).
³Strasbourg, Europa-Park Rust (incl. admission), Rothenburg ob der Tauber, Nuremberg, Baden-Baden (incl. admission to Caracalla Spa), Lake Constance.



Heidelberg's Old Bridge with the Minerva statue



Summer courses German and English (6-17 years)

Summer holiday language courses for children and young people (6-17 years) in one of Germany's most beautiful cities!

Overview

- German or English courses for small groups of children and young people from all over the world (max. 15 learners).
 - Accommodation with carefully selected host families; young people over the age of 16 can also stay in our halls of residence (see from page 40).
 - Meals, varied leisure programme, transfer.
- All modules can be booked individually or as a package.



Language course

Registration fee (first-time participation only): €50 (2 people: €30 / person; 3 people: €25 / person; 4 or more people: €20 / person). Parent-child programme: 10% off the course fees. Children take part in the junior programme and parents participate in an intensive course of at least 10 teaching hours per week. Accommodation in halls of residence, apartments or with host families. Discounts on course fees and additional modules are available for joint registrations: two junior learners: 5%; three junior learners: 10%; four or more junior learners: 15%.

No.	Language	Age group	Course levels ¹	TH/ week	Learners	Course times (Mon - Fri)	Fees per week (incl. course material)		Start	End
							1-3 wks	From 4 wks		
38	German	6-9; 10-13; 14-17 years ³	A1; A2; B1, B2	20	6-15	09:00-12:15	€ 225	€ 195	Every Monday from 03.07 to 07.08 ²	11.08
39	English		A2; B1; B2	20	6-15	09:00-12:15	€ 225	-	31.07 or 07.08 ²	

¹Language level C1 on request. Additional individual lesson (standard): €25 / 45 minutes.
²Start for complete beginners, German: 03.07 and 31.07; English on request.
³Young people aged 16 or over can participate in the courses for adults.



Modules

No.	Accommodation, lunch, leisure activities	Week days	Time	Fees per week	
				1-3 wks	From 4 wks
40	Host family accommodation (half board: Mon - Fri; full board: Sat + Sun) ¹	Sun - Sat	-	€ 325	€ 305
41	Lunch in the school ²	Mon - Fri	12:30-13:30	€ 105	€ 100
42	Leisure activities	Mon - Sat	13:30-17:00 ³	€ 195	€ 180

¹Modules 41 and 42 are obligatory for host family accommodation bookings; in general, host family supervision of children and young learners is only available from 17.30 on working days. Additional charge for an English-speaking host family: €100 per week.
²For an additional charge of €50 per week, we are happy to meet your specific preferences.
³Saturdays from 12:30 to 16:00.

Packages and additional modules

No.	Package / Fees per week	1-3 wks	From 4 wks
43	Language course + accommodation + lunch ¹ + activities ²	€ 770	€ 695
44	Language course + lunch ¹ + activities ²	€ 475	€ 430
45	Language course + activities ²	€ 385	€ 340
No.	Additional module: accompaniment	1-3 wks	From 4 wks
46	Accompaniment to school and back to host family accommodation (Monday - Saturday)	€ 275	€ 250
No.	Additional module: transfer	Transfer fees: see page 45	
47	Group transfer from Frankfurt am Main airport		
48	Individual collection from Frankfurt am Main, Karlsruhe / Baden-Baden or Stuttgart airports		

¹For an additional charge of €50 per week, we are happy to meet your specific preferences.
²Includes: Supervision, admission tickets and transport costs associated with the activities.



General information – summer courses

Course structure

- Learners in the **German courses** are grouped by age: 6-9, 10-13 and 14-17 years. Complete beginners can start on 3 July or on 31 July; learners with previous knowledge of the language can join every Monday during the programme. Courses are offered at levels A1 to B2 (C1 on request). Learners aged 16 or older can join a course for adults (16+), also at C1 or C2 level. A special pre-course placement test can be taken in the school. The junior programme finishes on 11 August.
- Learners in the **English courses** are also grouped by age: 6-9, 10-13 and 14-17 years. Courses are offered at levels A2 to B2 (C1 on request). Learners aged 16 or older can join a course for adults (16+), also at C1 level. Learners can join the programme on Monday, 31 July or Monday, 7 August; the programme finishes on 11 August.
- The placement test is on the first day of the course.
- The lesson structure and content are appropriate for the respective age group. Learners in all courses are taught by experienced, qualified language teachers in modern, bright classrooms.
- The maximum group size is 15 learners.



Leisure activities

Our **leisure activities programme** is a vibrant mix of sporting and cultural activities. Examples include: Neckar boat trip; discovery tour of Heidelberg; trips to Heidelberg zoo, the botanical gardens, the Fairytale Paradise on Königstuhl, Heidelberg castle, the Museum of the Palatinate Heidelberg; sports activities, a picnic by the Neckar, games and sports in the F+U Campus sports hall; mini golf; group games evenings and cookery; swimming in Heidelberg's open air pool; hiking on the Heiligenberg; visit to the Tinnunculus falconry; visit to Thingstätte and much more. We also organise university tours for young learners.

Included: Supervision, admission tickets and transport related to the activity;
Not included in the price: Meals during trips.

Lunch

Lunch for course participants is provided by a professional caterer, specialising in catering for nurseries and schools. The cook strictly complies with current standards regarding hygiene, sustainability and verified origin of ingredients. Please notify us when registering of any food allergy/intolerance or special dietary requirements such as a vegetarian or halal diet (see above for additional charges).

Accommodation

- Children and young people from the age of 12 can stay with one of our carefully selected host families, subject to availability. In the interests of welfare and responsibility, host family accommodation must also be booked with lunch in the school and the leisure programme. Host family accommodation includes half board, with full board at weekends.
- We offer a range of accommodation in halls of residents and apartments for parents or other adults accompanying children and/or young learners participating in our junior programmes. The accommodation is available even if booked without a language course.

Transfer from the airport, public transport

- Transfer fees from regional airports and stations: see page 45.
- Public transport (with the exception of transport associated with the leisure programme) and airport transfer costs are not included in the price. The price of a weekly ticket (bus and tram) is €40 for Heidelberg city area or €50 for Heidelberg and the surrounding area. A monthly ticket costs €80 (status August 2022).



Wintertime German courses for young learners (12-17 years)

Wintertime language courses in winter for children and young people (12-17 years) in one of Germany's most beautiful cities!

Overview

- **German courses** for small groups of young learners from all over the world (max. 15 learners).
 - **Accommodation** with carefully selected host families or in halls of residence (only for accompanied groups).
 - **Meals, varied leisure programme, transfer.**
- All modules can be booked individually or as a package.



Language course

Registration fee (first-time participation only): €50 (2 people: €30 / person; 3 people: €25 / person; 4 or more people: €20 / person).
Parent-child programme: 10% off the course fees. Children take part in the junior programme and parents participate in an intensive course of at least 10 teaching hours per week. Accommodation in halls of residence, apartments or with host families.
Discounts on course fees and additional modules are available for joint registrations: two junior learners: 5%; three junior learners: 10%; four or more junior learners: 15%.

No.	Lan- guage	Age group	Course levels ¹	TH	Lear- ners	Course times (Mon - Fri)	Fees per week (incl. course material)	Start	Duration ³
50	German	12 + 13, 14-17 years ²	A2, B1, B2	20	6-15	09:00-12:15	€ 225	12.12.2022 18.12.2023	1 week

¹Levels A1 and C1 on request.
²Young people aged 16 or above can participate in adult courses.
³The course may be extended on request.





Modules

No.	Accommodation, lunch, leisure activities	Week days	Time	Fees
51	Host family accommodation (half board: Mon - Fri; full board: Sat + Sun) ¹	Sun - Sat	-	€ 325
52	Lunch in der school ²	Mon - Fri	12:30-13:30	€ 105
53	Leisure activities ³	Mon - Sat	13:30-17:00 ⁴	€ 195

¹Modules 52 and 53 are obligatory for host family accommodation bookings; in general, host family supervision of children and young learners is only available from 17.30 on working days. Additional charge for an English-speaking host family: €100 per week.
²For an additional charge of €50 per week, we are happy to meet your specific preferences.
³Our leisure activities programme is a vibrant mix of sporting and cultural activities. Examples include: discovery tour of Heidelberg; trip to Heidelberg castle, Heidelberg Christmas market, ice-skating, climbing, skiing/snowboarding, visit to the trampoline park, cinema, group baking and crafts. We also organise university tours for young learners.
Included: supervision, admission tickets and transport related to the activity. Not included: meals during trips.
⁴Saturdays from 12:30 to 16:00.

Packages and additional modules

No.	Package / Fees per week	Fees
54	Language course + accommodation + lunch ¹ + activities ²	€ 770
55	Language course + lunch ¹ + activities ²	€ 475
56	Language course + activities ²	€ 385
No.	Additional module: accompaniment	Fees
57	Accompaniment to school and back to host family accommodation (Mon - Sat)	€ 275
No.	Additional module: transfer	
58	Group transfer Frankfurt am Main airport	Transfer fees: see page 45
59	Individual collection from Frankfurt am Main, Karlsruhe / Baden-Baden or Stuttgart airports	

¹For an additional charge of €50 per week, we are happy to meet your specific preferences.
²Includes: Supervision, admission tickets and transport costs associated with the activities.



Russian academy for children (1-14 years)

In addition to supporting general development, our Russian academy teaches children and young people about the Russian language and culture. The focus of the lesson is age-appropriate teaching and consolidation of Russian language skills, musical education and the development of logical-mathematical thinking and creativity. The use of playful and methodical teaching elements helps pre-school children prepare for primary school.
Course start: Every Saturday (no lessons on public holidays or in August).
Minimum number of learners: 4 children.
Sibling discount: 2 children: 5%; from 3 children: 10%.

No.	Course	Course type	Age groups	Course times	Fees per month ¹
62	Russian (mother + child course)	In person	1-2 years	09:30-10:30	€ 50
63	Russian (mother + child course)		2-3 years	09:15-10:45	€ 50
64	Russian + music		3-4 years	10:30-13:00 12:30-15:00	€ 60
65	Russian + music		4-5 years	09:15-12:15 12:30-15:30	€ 60
66	Russian + music		5-6 years	09:30-12:30 13:15-16:15	€ 60
67	Russian + music		6-7 years	09:15-12:15	€ 60
68	Russian		7-8 years	09:30-12:30	€ 65
69	Russian		8-9 years	10:00-11:30 12:45-14:15	€ 35
70	Russian		From 10 years	10:00-11:30 13:00-14:30	€ 35
71	English		From 4 years	12:30-13:15 13:30-14:15	€ 35
72	English		From 6 years	11:30-12:30	€ 35
73	Art		From 7 years	11:30-13:00 12:30-14:00	€ 40
74	Literature + history		From 7 years	11:45-12:45	€ 35
75	Fitness + dance		From 4 years	09:15-10:00 11:40-12:25 12:30-13:15 13:20-14:05	€ 35
76	Theater		From 4 years	11:30-12:30 12:40-13:30 13:40-14:30	€ 35
77	Logic		From 6 years	11:30-12:30 12:45-13:45	€ 35

¹Plus cost of course materials.

No.	Course	Course type	Age groups	Course times	Teaching hours	1 TH ¹
78	Music (individual lesson)	In person	From 3 years	By arrangement	120 min. monthly	€ 75 / month
79	Russian or English (3-5 children)	Online	From 6 years	By arrangement	1 TH = 60 min.	€ 15
80	Russian (individual lesson)		From 6 years	By arrangement	1 TH = 60 min.	€ 26
81	Reading (3-5 children)		From 6 years	By arrangement	1 TH = 60 min.	€ 15

¹Plus cost of course materials.



Additional services, special courses, cultural programme

University advice

We offer a university advice service for our learners at the school who intend to begin a degree course at a German university after their language course. The service includes checking documentation, orientation and help in the selection of suitable universities/subjects, correction of letters of motivation and the CV and assistance with applications.

Requirements: Higher education admission qualification in the learner's home country. Please note: documents will be pre-checked. If documentation is insufficient or if there is little chance of a successful application, the service may be withheld.

Fee: €250 per university.



Provisional admission

We offer university application support for learners who have booked an intensive course of at least 12 weeks at our school and require provisional university admission for their visa application. We check the application documents and assist with the preparation of application documents for up to two universities, correction of the letters of motivation/ CV and communication with the universities. The processing time for the individual universities can take up to ten weeks; this should be taken into account in the application process.

Admission requirement: Evidence of the higher education entrance qualification in the learner's home country.

Fee: €550 (including processing fees charged by the respective university).

Successful application cannot be guaranteed. If the application is rejected by the university, €200 of the administration fee will be refunded. The university's processing fee is non-refundable.

Support with official administration

We offer customers requiring a visa the following services after arrival: support in almost all official administration matters, convenient registration or re-registration at the town hall, advice and appointment scheduling for opening or activating a bank account, help with organising German health insurance, checking documents for the immigration authorities and general information on extending visas.

Requirement: Language course booking of at least 12 weeks.

Fee: €295 (individual services, such as registration at the town hall, can also be booked separately for €95).



À la carte courses

Parallel to our intensive courses, we organise various special courses in cooperation with local sports clubs, organisers and music schools.

Selected courses: Football, handball, table tennis, tennis, basketball, field hockey, ice hockey, rugby and other sports, as well as music lessons and floristry. Please note that the practice sessions are invoiced separately. The fee depends on the number of hours booked and, moreover, on the type of activity. For sports lessons, all that is normally required is a small monthly fee, payable to the sports club.

Placement fee: €345 (successful placement cannot be guaranteed; if no placement is found, €225 will be refunded).



Piano practice

Practice session at the school's own piano: €12 / 60 minutes.

Language course and internship

Applications for the internship (maximum duration three months, unless offered as training module in conjunction with a vocational training programme) should be made at least eight weeks before the preferred starting date.

Requirements: Participation in an intensive course of at least two weeks and knowledge of German (level B1; for an internship at the Academy of Languages, level A1 is sufficient). Applicants from third countries must provide a work visa for the internship (e.g. a Working Holiday visa). All applicants must also provide evidence that the internship supports career orientation (orientation internship) or is to be carried out as an accompaniment to training or studies. Supporting evidence may include, for example, a training contract, course enrolment form or school letter of authorisation.

Placement fee: €495 (Successful placement cannot be guaranteed. If placement is not possible, 50% of the fee will be refunded; alternatively, the internship can be completed at F+U).

Language learning and cultural training

The programme is designed for young people keen to take an active role in our cultural programme, alongside their German course. We strongly recommend participation in the programmes offered by our Japanese Centre and Chinese Centre.

Administration fee: €295.

Cultural programme

Groups are accompanied by a member of school staff; unless otherwise indicated the fee includes only travel and personnel costs. The minimum number of participants for the events is 8 (half-day and full-day programme: 12). School classes participate in our general programme; separate activities are only organised for an additional fee. Details are available on request.

See page 30 for additional information.

Childminder service

Parallel childminding service for parents participating in an intensive course: €25 per 45 minutes (two children: €20 per child; three children: €15 per child).

Map: residences, apartments, places of interest





Host families

Administration fee: €80; **deposit:** €200 (for deposit refunds please contact us by Wednesday, 16.00).
30% additional charge for each of the following: Wi-Fi guarantee; English-speaking host family; full board (breakfast and evening meal with the family; packed lunch).
Use of host family's kitchen for room only bookings: 20% additional charge.
You will be advised of the name and address of the host family two weeks before moving in, and upon full payment.
Host family accommodation: Laundry once or twice a week. The rental contract can be cancelled with a notice period of six weeks.
Move in: Sundays, 11.00-18.00, **move out:** Saturdays 10.00-18.00 (outside these times: €35 surcharge and only with advance confirmation). In case of delay, please contact your host family.

Cat-egory	Distance to school	Meals	Rent per week / room						Extra day ¹ Rent per day / room	
			1-4 weeks		5-15 weeks		From 16 weeks			
			SGL	DBL	SGL	DBL	SGL	DBL	SGL	DBL
HF-A	2 - 30 minutes by public transport ²	Half board	€ 315	€ 550	€ 265	€ 455	€ 255	€ 435	€ 55	€ 100
		Breakfast	€ 265	€ 465	€ 240	€ 410	€ 230	€ 390	€ 50	€ 90
		Room only	€ 220	€ 400	€ 210	€ 370	€ 200	€ 350	€ 45	€ 80
HF-B	Maximum 50 minutes By public transport ²	Half board	€ 245	€ 425	€ 230	€ 400	€ 220	€ 380	€ 50	€ 90
		Breakfast	€ 215	€ 370	€ 200	€ 340	€ 190	€ 325	€ 45	€ 80
		Room only	€ 195	€ 330	€ 185	€ 315	€ 175	€ 295	€ 30	€ 75

¹ An **extra day** is invoiced for arrival between on Saturday (15.00 and 20.00) at the host family accommodation, or for late departure on Sunday by 12.00 at the latest (all extra days must be confirmed in advance by the Academy of Languages).
² **Journey time to school (by public transport).** The distance to the bus/tram stop is not included; this is usually just a 5-10-minute walk from the accommodation. Further details are available on request.



Halls of residence

Administration fee: €95; **deposit:** €200 (tenancies of 12 or more weeks: €400). **Double room bookings** are only available for learners arriving together; the double rooms are furnished with bunk beds.
Group offers: See page 29.
Cooking facilities in the halls of residence: Concordia (category A), Schmitt (categories A, B), Turner (category B+) and März (category C), residences have shared kitchens. In März (category E) and Campus (category E) residences all rooms have a kitchenette. In the Denner (category D) residence there are no kitchens but all rooms have a microwave, a fridge and a kettle.
The accommodation contract can be terminated with a notice period of six weeks plus a €125 termination fee (see page 47).
Booking a residence category: First, please book your preferred residence category only. Approximately two weeks before your arrival – at the latest by Monday before your arrival – you will be informed of the name of your hall of residence.
Guaranteeing a specific hall of residence: For a one-time charge of €300 we guarantee allocation of your preferred hall of residence, subject to room availability at the time of booking.

Postponed arrival: If your arrival is postponed, e.g. due to a delay in issuing a visa, a new moving in date must always be agreed with the school. Furthermore, the originally booked room/residence category can no longer be guaranteed. In this case we reserve the right to offer accommodation in another hall of residence and/or residence category. The price difference resulting from a lower category, and the guarantee fee (where applicable) will be fully refunded. There is no extra charge if an upgrade is necessary! The only possible exception to these conditions is if the rent for the booked room is paid from the original moving in date.

Cat.	Rent per week / room								Extra day ¹ Rent per day / room	
	1-4 wks		5-15 wks		16-23 wks		From 24 wks			
	SGL	DBL	SGL	DBL	SGL	DBL	SGL	DBL	SGL	DBL
A	€ 160	-	€ 145	-	€ 130	-	€ 120	-	€ 50	-
B	€ 175	265	€ 170	235	€ 155	215	€ 145	€ 205	€ 55	€ 75
B+	€ 230	-	€ 210	-	€ 170	-	€ 160	-	€ 65	-
C	€ 280	420	€ 235	350	€ 180	270	€ 170	€ 260	€ 65	€ 70
D	€ 325	510	€ 275	445	€ 215	335	€ 210	€ 325	€ 75	€ 100
E	€ 325	510	€ 275	445	€ 215	335	€ 210	€ 325	€ 75	€ 100

¹ **Extra days** are invoiced for arrival for arrival on Saturday or departure on Sunday (all extra days must be confirmed in advance by F+U).
Broadcasting licence fees are not included in the rent and are payable by the tenant.
Two-room apartments are available only in the März residence; they must be rented by at least three people for the same time period. The additional charge for the third person is €150 / week and for a fourth person €125 / week.



Heidelberg market square with the city hall



Cat.	Name	Description	Heidelberg district
A	Schmitt	Shower and WC on the corridor; shared kitchen	Kirchheim (2.5 km from the school)
	Concordia		Südstadt (1.5 km from the school)
B	Schmitt	Shower in room; WC on corridor; shared kitchen	Kirchheim (2.5 km from the school)
B+	Turner	Shower and WC en suite; shared kitchen	Rohrbach (2.5 km from the school)
C	März	The residence is located in Heidelberg's Old Town; two rooms share a shower, WC and kitchenette	Old Town (500 m from the school)
D	F+U Hotel Denner	Excellent location, directly on Bismarckplatz, 200 m from the school	City centre (200 m from the school)
E	F+U Campus	Good locations (Bergheim and Old Town); small apartments with shower, WC and kitchenette en suite	Bergheim (by central train station, 1 km from the school)
	März		Old Town (500 m from the school)

Please note: The halls of residence are available to our learners **throughout the year**. Due to the very high demand, we recommend booking accommodation as soon as possible, as well as for the entire duration of your language course. If accommodation in a category is fully booked, we reserve the right to allocate a room of the same standard in external halls of residence.

Room changes: Occasionally, for reasons such as group arrivals, renovation work and postponed arrivals caused by visa delays, we may be unable to guarantee occupation of the same room for the entire duration of your language course, unless guaranteed in the terms of your booking. We hope you will understand if, in such circumstances, we need to offer an alternative room in a hall of residence in the same category. Please keep in mind that the accommodation confirmation refers only to the specified category, not to a specific hall of residence or room.



Guest houses, holiday homes, hotels, youth hostel

Referral fee: €175.

Guest houses, holiday homes: Prices on request; weekly rates depends on size, location in the city, furnishings and season; rates from €300 to €1500.

F+U Bayrischer Hof Hotel*:** The Bayrischer Hof, one of the most tradition-steeped hotels in the city, is located on Bismarckplatz, just 150m from the school and the Old Town (single rooms from €100 per night; double rooms from €130 per night).

Hotels in all price categories are located close to the school. Rooms can also be booked in Heidelberg's attractively situated **youth hostel**.



F+U Bayrischer Hof Hotel

Transfer to accommodation

Transfer to accommodation (to be booked by Thursday, 14.00, before arrival or departure).

Price per person	Heidelberg central train station		Mannheim central train station		Frankfurt am Main airport		Stuttgart / Baden-Baden-Karlsruhe airport		Hahn / Strasbourg / Saarbrücken airport	
Distance	2 km		20 km		80 km		120 km / 95 km		160 km / 140 km / 160 km	
Route	One way	Both ways	One way	Both ways	One way	Both ways	One way	Both ways	One way	Both ways
1 person	€ 30	€ 55	€ 75	€ 145	€ 150	€ 295	€ 300	€ 590	€ 300	€ 590

We will be happy to provide a quote for two or more people.

Parking*

Parking is available in the unsupervised car park at the Concordia hall of residence for €25 per week. There is public, paid parking available in the school building (approx. €150 per month).

*Advance booking required.



24-hour telephone service

You can reach us round the clock, seven days a week on +49 6221 9120-38.



Arrival and departure

Move in: Sundays, 10.00-22.00. On Saturday (13.00-18.00) moving in is possible only with prior agreement and payment of an extra day's rent (see page 43). Please inform us of your exact arrival time no later than Thursday (14.00) before you move in. If you inform us any later, we will not be able to guarantee the handover of the key at your preferred time. In case of delay, please call our weekend team on +49 162 29333-26 (this number is only active on moving in days).
Move out: Saturdays, by 12.00. On Sunday (by 10.00 at the latest) moving out is only possible with prior agreement and payment of an extra day's rent (see page 43).

Halls of residence have a 'student' character

Accommodation rates for halls of residence and apartments are calculated to reflect both location (distance to school, attractiveness of the district) and the furnishings/facilities of the accommodation. However, please bear in mind that all our halls of residence and apartments, including those in higher categories, have a 'student' character.

Internet, PC use

Most halls of residence and apartments are equipped with Internet access. We provide Internet access free of charge. Please note that it is not a high-speed Internet connection. Now and then demand for accommodation exceeds our supply of 270 rooms, in which case we rent additional rooms and apartments. Information on their Internet facilities is available on request. Compliance with German Internet law is required at all times. There may be temporary disruption to Internet provision.

You can also use the computers in our school, with free Internet access (50 computers in three IT rooms); Wi-Fi is also available from 07.30 to 20.00 Mondays to Fridays and on Saturdays from 10.00 to 16.00.

If you lock yourself out of your room we can provide a spare key on payment of a deposit. Please note that this service is only available during the following office hours: Monday to Friday: 8.30 to 18.30. Outside these times you will need to call a professional locksmith at your own expense (from €120, depending on the service provider).

A laundry and a lounge are available for residents at the F+U Campus halls of residence.

Cleaning the room and communal areas

Please note that for the entire duration of your stay you are responsible for cleaning your room. When you vacate the room, it must be clean and tidy. The occupant must remove furnishings that do not belong to the room and/or large items of rubbish before moving out. Kitchens, bathrooms and communal areas are to be left clean. Communal areas are cleaned up to twice a week by Academy of Languages staff.

Laundry facilities and cooking utensils

Halls of residence/apartments: Washing machines (coin operated) and tumble dryers are provided in all residences except Denner. We provide Denner tenants with a list of nearby laundrettes.

Bed linen and towels: Bed linen is provided on arrival only; please bring your own towels.

Cooking utensils, cutlery and crockery can be hired, subject to availability, for a deposit of €40 plus a service charge of €40 (the deposit is refunded upon the return of complete, clean sets).

Tenancy extension, changing accommodation, cancellation, changes to bookings (halls of residence, apartments, host families)

Please note that we cannot guarantee an extension of the tenancy; therefore, we recommend a contract that covers the entire duration of the course.

Change of accommodation (at own request): €80.

Termination of tenancy contract: If the contract parties conclude a tenancy contract for a fixed term, any earlier ordinary termination of the tenancy contract is generally excluded (§ 542 II BGB – German Civil Code). However, as a gesture of goodwill we permit the termination of the tenancy contract subject to the following conditions of notice:

Conditions of termination:

- By Tuesday, 15.30 after moving in: Cost: one week's rent.
- After this time, termination of the contract is only possible with six full rental weeks' notice (Sunday to Saturday), plus a €125 termination fee.
- The administration fee is non-refundable.
- The weekly rental price will be adjusted after notice of the shortened rental period.

If termination of the contract is confirmed by F+U, rent prepaid for the period after the amended contract expiry will be refunded, minus the fees listed in points a, b and c above. Notice of the termination must be submitted in writing (also possible by email) during accommodation office opening hours (room 10, Monday to Friday, 12.15-15.30).

Changing the type of accommodation from host family to hall of residence or from hall of residence to host family is possible, subject to availability and a notice period of two weeks.



F+U Campus residence, category E



F+U Campus residence, category E



F+U Campus residence, category E



F+U Campus residence, category E



Concordia residence, category A



Concordia residence, category A



März residence, categories D+E



März residence, categories D+E



Denner residence, category D



Denner residence, category D




Denner residence, category D



Denner residence, category D

Our educational partners



HPC International Boarding School

- For young people aged 14+ • 24-hour supervision
- Individual support • Central location
- Pedagogically qualified specialist staff
 - Single rooms, shared bathroom
 - Internet connection
- Varied leisure programme
- 24/7 telephone service
- Participation in language courses at the Academy of Languages or programmes at HPC schools

Tel. +49 6221 912035 • boardingschool.hd@fuu.de • hpc-international.de

HPC schools

- Bilingual primary school
- Realschule secondary school
- **NEW!** Comprehensive secondary school*
- Bilingual Gymnasium secondary school
- Vocational Gymnasium from years 8 and 11
- International school IB®





* In preparation – planned opening at start of school year 2022/23

Tel. +49 6221 7050-101 heidelberg@fuu.de hpc-schulen.de




CARE | HEALTH | EDUCATION | SOCIAL WORK

- Elderly care assistant • Nurse • Vocational trainer/educator
- One-year vocational college for social education • Educator
- Educator specialising in youth and residential education
- Social education assistant • Pharmaceutical-technical assistant
 - Special educational needs teacher
- Developmental disability nurse • Physiotherapist
 - Occupational therapist Speech • therapist

Optional Apprenticeship  Studies 

Tel.: +49 6221 7050-4131 | Email: info@fuu.de fachschulzentrum.de

Our educational partners

Bachelor's and Master's degrees, further education, language training

Study models CLASSIC | DUAL | DISTANCE

BA Business Administration in 13 specialisations 

BA International Management 

MA Business Management & Development  

MA Business Psychology 
Business Coaching | Business Consulting

- Maximum flexibility with our three study models
- Wide selection of cooperating companies in dual studies
- Individual support, careers service, international office



VICTORIA | International University of Applied Sciences
Bernburger Str. 24 – 25 | 10963 Berlin
Phone: +49 30 206176-63
Email: info@victoria-university.de
victoria-university.de

Make it in GERMANY

Dual bachelor programmes

FOUNDATION PROGRAMME
“WORK & STUDY GERMANY”
for international students



Your dual work-study degree at 11 campuses across Germany

 +49 162 2933320
international@ibadual.com
ibaDual.com/Foundation

MANAGEMENT SOCIAL WORK HEALTH TECHNOLOGY



How much of a head start will you give yourself?

- Shorter course duration (requires previous training in care or social work)
- Optimum compatibility of training/ profession and study
- Close integration of theory and practice

Phone: +49 6221 7050-2402
Email: beratung@isab-studium.de



Career-integrating bachelor degree programme
for international skilled workers

- Organisation and Social Pedagogy
- Physician's Assistant

isba-studium.de



Are you interested in studying in Germany? At the F+U universities (iba, ISBA, VIC-TORIA) we offer classic and distance study models and a variety of bachelor degree programmes.

In the dual study programme, students learn theory in the university and receive continuous practical training with one of our partner companies. They graduate with a state-recognised bachelor degree.

To prepare for the course, international prospective students can complete one of our online preparatory programmes. These take between 6 and 10 months. Beginners in the German language are also able to join this preparatory programme. A recognised certificate of secondary education from the student's home country is required. Applicants with a secondary education certificate that is not officially equivalent to the German Abitur can take the preparatory programme instead of a Studienkolleg course.

Possible course subjects*: Business Administration with 14 specialisations (e.g. hotel and tourism management, catering management etc.); Informatics & Management; Engineering & Management, Social Pedagogy & Management; Physician's Assistant.

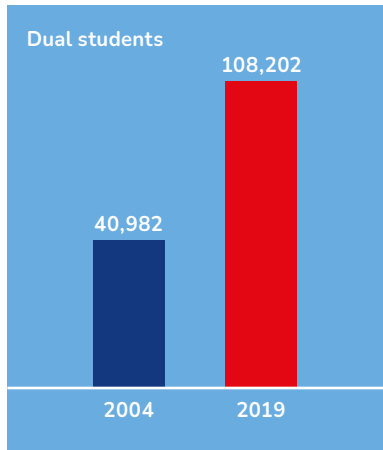
Possible course locations*: Heidelberg, Berlin, Chemnitz, Cologne Darmstadt, Freiburg, Hamburg, Munich and more.

* Subject to availability.



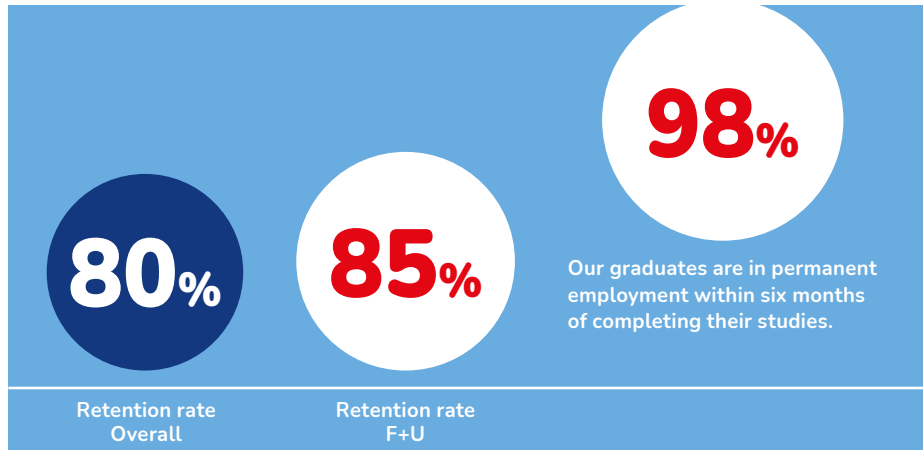
Dual study in figures

Enormous growth in demand for dual study places



Source: AusbildungPlus database
(Status: January 2019)

High retention rate for dual students = high level of company satisfaction with students and the study model



Source: iba retention study
(Status: May 2017)

Benefits of dual study at F+U

- Excellent career prospects after graduation.
- You receive a monthly allowance to cover living expenses.
- The practice companies cover the degree programme tuition fees. You only pay the costs of language and subject-based preparation courses before the programme.
- Special offer for language course students at the Academy of Languages: If you are accepted by one of our universities (of applied sciences or cooperative education), you will receive a subsequent 25% refund of the preparatory language course fees after successful enrolment (see page 18, German intensive courses).
- Applicants without a university entrance qualification equivalent to the Abitur can qualify for admission to their degree programme during the language course (this replaces the Studienkolleg preparatory course).
- A provisional offer of university admission can be made for applicants requiring a visa.



Option 1: Preparatory programme for learners with equivalent university entrance qualification*

Foundation Programme WORK & STUDY GERMANY				
Preliminary German course (A0 - A2)	Phase 1 March - May / September - November	Phase 2 June - August / December - February	Phase 3 September / March	Starting October / April
	German course (B1 - B2.1) 20 hours/week; 12 weeks	German course (B2.2 - C1) 20 hours/week; 12 weeks	Work-based learning at a German company (optional)	Dual work-study Bachelor's programme
	Nanodegree: Digital Business*			Business Administration (BA) / Informatics & Management (BSc) (180 ECTS)
	Current digitalization technologies Management information systems (5 CP) 5 hours/week; 12 weeks	Programming paradigms & application Insights into Artificial Intelligence (5 CP) 5 hours/week; 12 weeks		
	Preparing for Practice (Workshops Work & Study; Career Coaching)	Preparing for Practice (Finding a Partner Company; Virtual Recruiting Fair)		

*Subject to change.

Option 2: Preparatory programme for learners without equivalent university entrance qualification (can replace Studienkolleg preparatory college)*

Foundation Programme WORK & STUDY GERMANY				
Preliminary German course (A0 - A2)	Phase 1 March - May / September - November	Phase 2 June - August / December - February	Phase 3 September / March	Starting October / April
	German course (B1 - B2.1) 20 hours/week; 12 weeks	German course (B2.2 - C1) 20 hours/week; 12 weeks	Work-based learning at a German company (optional)	Dual work-study Bachelor's programme
	Nanodegree: Business Essentials (in German)*			International Business Management (BA) (180 ECTS)
	Interactive Language Training; German for Professional Purposes (10 CP) 10 hours/week; 12 weeks	Business & Management Principles; Business Mathematics (10 CP) 10 hours/week; 12 weeks		
	Preparing for Practice (Workshops Work & Study; Career Coaching)	Preparing for Practice (Finding a Partner Company; Virtual Recruiting Fair)		

*Subject to change.

Partner companies





Heidelberg Neckar (362km) overlooking the Old Town and the castle



State-recognised Vocational College of Foreign Languages – full-time programmes in Heidelberg – now also eligible for funding with an education voucher (Bildungsgutschein)

Vocational training in foreign languages opens up diverse, stimulating and, above all, future-proof career prospects. In addition to the foreign language qualification programme, you receive training that leads to qualifications in the fields of commerce, IT and administration. These interdisciplinary qualifications are highly sought after in commerce, in national and international organisations and academic institutions, as well as in the service sector.

The **Multilingual Correspondence Clerk (Welthandelskorrespondent*in)** programme is a real highlight of the Vocational College. On this course, students learn three key European languages (English, French and Spanish) and also gain language skills in Russian, Chinese or Japanese. International students can complete the state-recognised programme with English and German as a foreign language, enabling them to acquire and prove sound vocational German language skills at C2 level.

The **registration fee** is €200. The **examination fees** and cost of **course material** are not included in the quoted course fees. The following languages are **state recognised**: Chinese, English, French, Japanese, Russian, Spanish and German as a foreign language.

Other possible examinations: IHK (Chamber of Trade and Commerce), HSK for Chinese, JLPT for Japanese, TRKI for Russian, telc or TestDaF for German as a foreign language.

Start: 11.09.2023.

Entry requirements for the state-recognised qualification: Intermediate secondary school certificate, German language skills at level C1 and English language skills at level B1 (language certificates should not be more than two years old).

Programme funding: Student-BaföG, education voucher (Bildungsgutschein), student loan; other advantages: child benefit, instalment payments¹.

Training programme / language(s)	Fees ¹	Duration	Start
Foreign Language Correspondence Clerk (one language) English	€ 3,257	1 year	September
Foreign Language Correspondence Clerk (two languages) English and French, Spanish or German as a foreign language	€ 6,846	2 years	September
Foreign Language Correspondence Clerk (two languages) English and Chinese or Japanese or Russian	€ 7,728	2 years	September
Foreign Language Correspondence Clerk (three languages) English and French or Spanish + Chinese or Japanese or Russian	€ 8,722	2 years	September
European Secretary (three languages) English + French + Spanish	€ 8,280	2 years	September
Multilingual Correspondence Clerk (four languages) English and French and Spanish + Chinese, Japanese or Russian	€ 9,936	2 years	September

¹Payment by instalment is possible; further information is available on request.

Preparatory course: German as a foreign language

Prospective students with language skills lower than German C1 and/or English B1 have the opportunity to complete a preparatory course ahead of the training programme in order to achieve the required language level (German C1 and/or English B1).

Preparatory semester one: German as a foreign language

Entry level: A1; **target level:** B2; **duration:** 30 weeks at 30 TH per week; **start:** first Monday in September.

If you already have some knowledge of German, you can join the appropriate course level on the first Monday of every month, throughout the year.

Fee*: €4,500 in person at our school in Heidelberg; €2,800 in hybrid lessons, in the comfort of your own home (wherever you live). For mid-course entry, the fee is lower, taking into account the existing language level and shorter duration of the course; see the fees table on page 18. (*The cost of books is not included.)

German class: Monday - Friday, 09.00 - 10.30 + 10.45 - 12.15 + 13.00 - 14.00.

Preparatory semester two: German as a foreign language + other foreign languages

Entry level: B2 / C1; **duration:** 16 weeks at 35 TH per week; **start:** first Monday in May. If you already have some knowledge of German, you can join the appropriate course level on the first Monday of every month, throughout the year.

Fee*: €2,480 in person at our school in Heidelberg; €1,800 in online lessons, in the comfort of your own home (wherever you live). For mid-course entry, the fee is lower, taking into account the existing language level and shorter duration of the course; see the fees table on page 18. (*The cost of books is not included.)

German class: Monday - Friday, 09.00 - 10.30 + 10.45 - 12.15.

Business correspondence class: Monday + Thursday, 13.00 - 14.30.

Business German class: Tuesday + Wednesday + Friday, 13.00 - 14.30.

Preparation for English level B1: Please see the course descriptions from page 22.



Heidelberg Old Town in winter

Participant statistics (first half of 2022)

Course participants: 3,405; exam candidates: 945; home countries: 76

In the first half year of 2022, an average of 650 learners per week took part in our language courses (main, module and evening courses, as well as individual lessons), in training programmes offered by our Vocational College of Foreign Languages and in our company training.

In this period, a total of 3,405 learners participated in our language programmes. The average course duration was 6.2 weeks. Meanwhile, language exams were taken by 945 candidates. This means that in the first half of 2022, a total of 4,450 learners completed courses and exams at our language school. Participants came from 76 different countries.

Learners’ home countries: German courses, 1st half of 2022 (approx. 2,750 learners)

Countries	Share	Countries	Share	Countries	Share	Countries	Share
Turkey	9.40%	Switzerland	4.60%	Poland	2.70%	Russian Federation	1.50%
Mexico	8.20%	Ukraine	4.50%	Brazil	2.20%	South Korea	1.50%
Italy	8.10%	People’s Republic of China	4.20%	USA	2.10%	Syria	1.20%
Tunesia	6.90%	Spain	3.50%	Colombia	1.80%	Iran	1.10%
Japan	6.50%	Panama	3.50%	Ecuador	1.70%	India	0.80%
Israel	5.10%	France	2.90%	Cyprus	1.60%	53 more countries	14.40%
Total							100%

Learners’ home countries: English courses, 1st half of 2022 (approx. 495 learners)

Countries	Share	Countries	Share	Countries	Share	Countries	Share
Germany	36.90%	Colombia	2.90%	France	2.10%	Syria	1.60%
Japan	9.80%	Ukraine	2.90%	Hungary	1.90%	Russian Federation	1.50%
Turkey	7.80%	Saudi Arabia	2.80%	Brazil	1.80%	Iran	1.40%
Panama	6.50%	Spain	2.50%	Ecuador	1.80%	South Korea	1.20%
Georgia	3.50%	Switzerland	2.50%	Chile	1.80%		
Italy	3.10%	Poland	2.10%	People’s Republic of China	1.60%	Total	100%

Most popular courses

Intensive courses German	51%
Intensive courses English	11%
Individual lessons	10%
Evening courses German	7%
Junior courses *	5%
Duo lessons	5%
Educational leave	4%
Foreign language professions	4%
Evening courses English	3%
Total	100%

*Russian academy for children

Most popular exams

Please see pages 12-13 for a description of the exams.

telc	33%
TestDaF	22%
IELTS	18%
TOEFL	14%
TestAS	8%
TOEIC	3%
DTZ	2%
Total	100%





Our language school is located on the 3rd floor of the Darmstädter Hof Centrum, Hauptstrasse 1.



Contact

Academy of Languages

F+U Rhein-Main-Neckar gGmbH

Hauptstrasse 1
D-69117 Heidelberg

Tel.: +49 6221 7050-4048
Fax: +49 6221 23452

languages@fuu.de
www.academy-languages.de/en

Telephone service 24/7:
Tel.: +49 6221 9120-38



Language courses in Heidelberg

Arabic, Brazilian Portuguese, Bulgarian, Chinese, Croatian, Czech, Dutch, English, French, German, Greek, Hungarian, Italian, Japanese, Polish, Portuguese, Romanian, Russian, Spanish, Swedish, Turkish, Ukrainian and more.

International test centre

TestDaF, telc, ECL, TOEFL®, TOEIC®, IELTS, OnSET, TestAS and more.

State-recognised Vocational College of Foreign Languages

Foreign Language Correspondence Clerk, European Secretary, Multilingual Correspondence Clerk, Translator

Technical colleges

Elderly care, special needs education, occupational therapy and more.

academy24

Business administrator, Business economist and more.

Heidelberg Private School Centre

Gymnasium, Realschule, bilingual primary school, bilingual Gymnasium, vocational college, International Baccalaureate®.

International universities of cooperative education

Bachelor degree programmes in the dualen system, preparation for the alternative Feststellungsprüfung (W-course).

International university of applied sciences

Bachelor and master degree programmes in dual, full-time or distance models.

