

# **VICTORIA** ACADEMY OF LANGUAGES

The Language Institute of VICTORIA | International University of Applied Sciences

2025



**Language  
is the key to  
the world.**

Language courses. Exam center.  
Corporate training. Accommodation.

**[victoria-languages.de](https://victoria-languages.de)**

# Welcome

Since 2013, the VICTORIA | Academy of Languages, formerly the F+U Academy of Languages, has specialized in offering language courses to prepare students for university as well as tailor-made corporate and government training, which are held at the International Education Campus near Potsdamer Platz, on-site at our clients' premises or live on|line in virtual classrooms. As a test centre for a wide range of test formats (TestDaF, TOEFL, etc.) and languages, we support our students until they have successfully completed their language training. Since 2017, we have also been authorized to call ourselves a "telc Competence Center University". Our international expertise helps hundreds of young people from all over the world to study in Germany.

**Our clients benefit from the decades of experience of our language schools and our higher education institutions, our flexibility and homogeneous learning groups.** The family-run F+U group of companies is one of the largest private education providers in Germany with over 40 years of experience. It has locations throughout Germany and in other European countries and cooperates with public and private educational institutions worldwide.

Since 2021, the VICTORIA | Academy of Languages has been part of the VICTORIA | International University of Applied Sciences – formerly the Hochschule für Wirtschaft, Technik und Kultur (hwtk), for which we have been acting as the International Office since 2017. **The upgrade as a language institute further sharpens our profile and emphasizes our proximity to the academic world.** Not only can our ECTS-eligible language courses be credited toward a later university degree, but the specialization of VICTORIA | International University of Applied Sciences in dual study programs in the model of the split-week is also reflected in our language courses: All intensive courses are now geared towards the most effective possible interlinkage of theory and practice. In dozens of subject areas and sectors, from law to marketing, healthcare and international management, we have our finger on the pulse and know exactly what is important in terms of technical language.

**With us, you can achieve your goal easily, quickly and according to plan – regardless of whether you want to go to university or continue your job training.**



# Content

Welcome	2
More than a language school	4
What makes us special	5
At a glance	6
Studying languages at VICTORIA	8
German	10
English	14
Other languages	16
Language exams at VICTORIA	18
Study preparation	20
Berlin in figures	21
Living at VICTORIA	22
VICTORIA education partners	26
Central location	27
Examination calendar	28
Calendar of events	30

## **VICTORIA | Academy of Languages**

Bernburger Str. 24 – 25  
10963 Berlin

### **Opening hours**

Monday to Friday 8:00 – 17:00

### **Accommodation**

Move-ins on Sundays  
Move-outs on Saturdays

Phone: +49 30 206176-807  
info@victoria-languages.de  
agents: request@victoria-languages.de  
victoria-languages.de



# More than a language school



Since 2013, our Berlin language school has been providing goal- and practice-oriented language programs for prospective international students (university preparation), professionals, public authorities and diplomatic missions in both Berlin and Brandenburg.

As the **Language Institute** at the VICTORIA | International University of Applied Sciences as well as the **International Office**, our international expertise helps hundreds of young people from all over the world find places to study in Germany every year. The fact that the VICTORIA | International University of Applied Sciences specializes in dual courses of study in the split-week model is also reflected in our language courses: all intensive courses are now geared toward **the most effective possible integration of theory teaching and practical applicability**.

We want you to be as comfortable on the street, at the bakery, or in a German government office as you are at work or in a lecture hall.

Our **individual and corporate customers** also benefit from our proximity to the academic community, its research and innovation potential, and its dual network with the Berlin business community. With ties to dozens of industries including law, marketing, healthcare and international management, we have our finger on the pulse of the times.

The allegory of the winged VICTORIA stands symbolically for personal success, for the ability to confidently overcome all obstacles along one's own personal and professional life path. **Language is the key to foreign worlds**. Anyone who learns a foreign language, opens up new frontiers and transcends borders. This is what VICTORIA stands for.

- 1 Efficiency**  
A fast, effective language learning system with an unbeatable price-performance ratio.
- 2 More than a language school**  
As the language institute of a university, we benefit from the academic research and teaching, as well as the opportunities for networking, and international exchange.
- 3 Decades of Experience**  
The sponsor of our language and higher education courses celebrated its fortieth anniversary in 2020 and is today one of the largest family-run educational companies in Europe.
- 4 Flexibility and Modularity**  
Plans change? No problem! It is possible to postpone the start of a language course. Not feeling great? No Problem either! Let us know you want to join the class online for the day.
- 5 Predictability**  
Fixed start dates (see p. 10) and duration for each level.
- 6 Homogeneous learning groups**  
Quick and efficient assessment at the beginning of the course and regular progress checks using VICTORIA intermediate level tests.
- 7 ECTS eligibility**  
Earn credits with all of our language programs.
- 8 Proximity to business**  
VICTORIA | International University of Applied Sciences works with 500 dual cooperation companies and is a member of countless associations and networks, such as Berlin Partner for Business and technology.
- 9 Experienced, long-standing test center**  
for TestDaF, telc, TOEFL, and others. Awarded as "telc Competence Center University"
- 10 Certified Quality**  
As part of the university we are subject to a strict, close-meshed quality management. Our independent awards and quality seals make this a guarantee.



**What makes us special**

# At a glance

★ **Modern, newly equipped classrooms** and computer areas in the historic Gründerzeit building

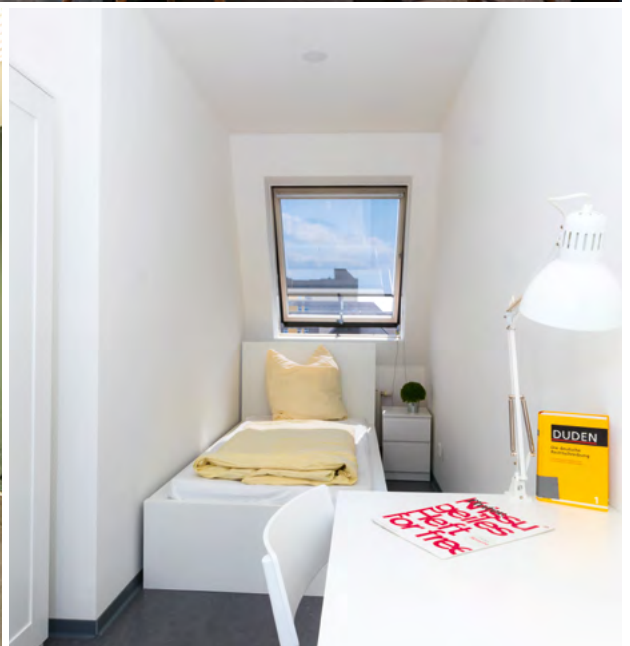
★ **Coffee break and lounge area** on the 1st floor with various snack and beverage vending machines

★ Professionally managed **lending library** (languages, economics) with **computer reading room** for self-study with a **copier/printer** (for a fee)

★ **Campus dormitory** directly in the school building (single, double, shared rooms)

★ Exclusive **courtyard** and small garden area for taking a break and doing homework

★ **Academy Hostel** (rooms with private bathrooms) within 15 minutes walk from the campus





**Free career counseling** for international guests by the VICTORIA | International University of Applied Sciences team



**Excellent accessibility** to the campus and housing by public transport (S/U Potsdamer Platz, U Mendelssohn-Bartholdy-Park, S Anhalter Bahnhof)



In the heart of **Berlin**, with a variety of shopping, café and restaurant options nearby. Government district, Reichstag, Brandenburg Gate, Friedrichstraße, Gendarmenmarkt, Checkpoint Charlie, Tiergarten and Gleisdreieck Park all within walking distance.



**Safety** is important to us! Campus and all accommodation is equipped with an alarm and camera system.



## Flexibility through technology

The VICTORIA | Academy of Languages has twenty-two seminar rooms equipped with **high-quality teaching technology**, creating a contemporary learning environment both on|line and on|campus. All group courses are hybrid, i.e. based on a complementary exchange between on|line and on|campus participants.

**Plans change, even by the day – so a spontaneous switch to virtual classes is also permitted to on|campus learners at any time.** Cold symptoms, housing changes, early departures, and even parties the night before no longer lead to a loss of time and knowledge! Our on|line offerings do not replace on|campus courses but actually perfectly complement it by using modern collaboration and learning tools. Personal, individual interaction between teachers and students is at the heart of every lesson.



## Technical requirements for on|line-learning

on|line participation in our face-to-face courses requires a **stable Internet connection** as well as a **device (computer, laptop, tablet) with a functional camera and headset**. Participation via smartphone is also possible, but due to the limited software options and screen size, is recommended only in exceptional cases.

More Info:



# Studying languages at VICTORIA



on|campus



on|line



on|spot

**No unwanted surprises.**  
**We make the fine print bold right here for you.**

Registration fee for new customers is **50 €**  
 One lesson lasts 45 minutes.  
 Free trial lessons are possible at any time.

The prices are mostly structured weekly and differ according to the number of weeks you book. We offer discounts for long-term bookings. **The more you book, the lower the weekly price gets!** The discount applies if you book the number of weeks at once and pay the whole amount in advance.

## Common European Framework of Reference for Languages (CEFR)

CEFR Level	TH per Level	Language Certificates	
		English	German
A1	160	English A1, LCCI Preliminary <sup>1</sup> , TOEIC® 10-120 <sup>1</sup>	telc Deutsch A1
A2	160	English A2, LCCI Preliminary 2, TOEIC® 120-225 <sup>1</sup>	telc Deutsch A2
B1	160	English B1, B1 Business, LCCI-1, TOEIC® 226-550 <sup>1</sup> , TOEFL® 42-71	Zertifikat Deutsch (telc), Deutsch-Test für Zuwanderer
B2	160	English B2, B2 Business, LCCI-2, TOEIC® 551-785 <sup>1</sup> , TOEFL® 72-94	telc Deutsch B2, B2 Beruf, B1/B2 Pflege, TestDaF 3 (B2.1-B2.2), DSH 1
C1	160	FSK English C1, LCCI-3, TOEIC® 786-945 <sup>1</sup> , TOEFL® 95-113	telc Deutsch C1, C1 Hochschule, C1 Beruf, B2/C1 Medizin, TestDaF 4 (B2.2-C1.1), TestDaF 5 (C1.1-C1.2), DSH 2
C2	400	Übersetzer in, English C2, LCCI-4, TOEIC® 946-990 <sup>1</sup> , TOEFL 114-120	DSH 3, telc Deutsch C2

### Course duration (of one level)

One level is 160 lessons (TH), which – depending on the intensity of the booked course – can be completed in **seven** weeks, assuming regular course attendance and intensive

review of the material covered. In the case of individual tuition, the total number of hours required to complete a course level is reduced by approx. 50 %.

<sup>1</sup>The test results listed here refer to the Listening & Reading language competencies in the TOEIC® exam.





More Info:



**i** CEFR criteria, acquired language skills

CEFR Level	Listening	Reading	Speaking	Writing
A1	Can understand simple sentences.	Can understand simple sentences.	Can communicate in short phrases.	Can produce short, simple postcards.
A2	Can understand the overall meaning of short, simple, clear messages.	Can read short, simple texts, e.g., personal correspondence.	Can communicate in sentences in everyday situations.	Can produce short, simple notes, messages and personal letters.
B1	Can understand important information regarding work, free time, etc.	Can comprehend text written in everyday language.	Can participate in conversations about family, hobbies, and work.	Can produce simple, connected text on familiar themes.
B2	Can follow lengthy statements and most TV programs.	Can understand newspaper articles and literary prose.	Can communicate fluently and spontaneously.	Can produce detailed texts and effectively present an argument.
C1	Can understand lengthy statements and TV programs without great effort.	Can comprehend complex and literary texts.	Can express thoughts fluently, spontaneously, and precisely.	Can produce clear, well-structured texts on complex subjects.
C2	Can understand complex language with ease, also when spoken quickly.	Can comprehend any text with ease.	Can participate effortlessly in all conversations and discussions.	Can produce and discuss sophisticated and complex texts.

# German



All of our German intensive courses are aimed at an academically or professionally educated audience, who already know their own weaknesses and strengths and would like to progress just as quickly as they do sustainably. We don't play around. We simply make it happen.

Each level can be finished in just 7 weeks. After only 35 weeks, participants with no prior knowledge of German can learn up to the level of C1. We offer fixed start dates for each level from A1 to C1. Students who are in between levels can join any Monday. Courses for beginners in German are offered every first Monday of a month.

## **i** Start dates 2025

**A1:** Jan 6, Feb 3, Mar 3, Apr 7, May 5, Jun 2, Jul 7, Aug 4, Sep 1, Oct 6, Nov 3, Dec 1

**A2:** Jan 6, Feb 3, Feb 24, Mar 24, Apr 21, May 26, Jun 23, Jul 21, Aug 25, Sep 22, Oct 20, Nov 24

**B1:** Jan 27, Feb 24, Mar 24, Apr 14, May 12, Jun 9, Jul 14, Aug 11, Sep 8, Oct 13, Nov 10, Dec 8

**B2:** Jan 13, Feb 10, Mar 24, Apr 14, May 12, Jun 2, Jun 30, Jul 28, Sep 1, Sep 29, Oct 27, Dec 1

**C1:** Jan 27, Mar 3, Mar 31, May 12, Jun 2, Jun 30, Jul 21, Aug 18, Sep 15, Oct 20, Nov 17, Dec 15

**Test preparation:** Jan 27, Mar 31, Jun 2, Sep 1

**Semi-intensive evening classes – all levels:** Feb 3, May 5, Aug 5, Nov 3

The prices for our Group Courses are structured weekly and differ according to the number of weeks you book. We offer discounts for long-term bookings.

**The more you book, the lower the weekly price gets!**

**Full prepayment is required.**

**More Info:**



## 1. Semi-Intensive evening classes

NEW



on|campus, on|line  
9 hours per week

Monday, Wednesday  
and Thursday  
18:00 – 20:30 CET

4–10 participants\*  
A1–C1

### Description

Our brand new semi-intensive evening classes are designed for all busy people who want to take studying German seriously! 3 times a week for a 3-hour class, our experienced teachers will bring you up to speed in your language development. Got stuck in the office? No problem, just participate online in our small class designed for international professionals in Berlin! You will reach your goals much faster than in regular evening classes and our team will support you on your way through all levels (A1 to C1) – from Beginner to Berliner!

### Price per week

1–4	€ 90
5–12	€ 85
13–24	€ 80
from 25	€ 75

### On|line discount:

15 % discount for on|line only participation!

## 2. Intensive course



on|campus, on|line  
30 hours per week

Monday–Friday  
9:00 – 14:30 CET

6–15 participants\*  
A1–C1

### Description

Theory and practice course at a special package deal! The perfect combination of teaching for those who want to progress quickly and sustainably. The days of instruction are structured in a dual format, i.e. divided into two parts: In the morning, theoretical knowledge is taught (theory course), and in the afternoon its pragmatic application is trained (practical course). The perfect combination of both linguistic theory and practice.

### Price per week

1–4	€ 250
5–12	€ 225
13–24	€ 200
from 25	€ 190

### On|line discount:

15 % discount for on|line only participation!

## 3. Theory course



on|campus, on|line  
20 hours per week

Monday–Friday  
9:00 – 12:15 CET

6–15 participants\*  
A1–C1

### Description

Focus on theoretical teaching of productive and receptive language skills (reading comprehension, listening comprehension, writing, speaking) as well as descriptive grammar instruction. Attendance of the application-oriented practical course in the afternoon is recommended. Participation both on|campus and on|line possible. **Flexibility guaranteed:** change between both learning environments is possible at any time.

### Price per week

1–4	€ 210
5–12	€ 185
13–24	€ 170
from 25	€ 155

### On|line discount:

15 % discount for on|line only participation!

## 4. Practice course



on|campus, on|line  
10 hours per week

Monday–Friday  
13:00 – 14:30 CET

6–15 participants\*

### Description

Focus on the practical application and consolidation of what has been previously learned. Specific language skills are promoted. Train for real-life everyday, professional and university situations. No systematic explanatory units. Taking the theory course in the morning is recommended. Participation in both on|campus and on|line possible. **Flexibility is a guarantee:** Switching between both learning environments is possible at any time.

### Price per week

1–4	€ 135
5–12	€ 120
13–24	€ 105
from 25	€ 95

### On|line discount:

15 % discount for on|line only participation!

\*Temporarily, but not permanently, the group size may be exceeded by on|line participants.

# German

## 5. Super Intensive course



on|campus, on|line  
35 hours per week

Monday – Friday  
8:15 – 14:30 CET or  
9:00 – 15:15 CET

6 – 15 participants\* or  
1 participant | A1 – C1

### Description

Supplement the intensive course (1.) with five individual training sessions with a professionally qualified teacher, prepare or follow up with the material of the day. Time to ask questions without shyness and to seek out higher-level learning. Individual, personalized arrangements are possible.

### Price per week

1 – 4	€ 475
5 – 12	€ 450
13 – 24	€ 425
from 25	€ 415

## 6. Combined Test Training course



on|campus, on|line  
30 lessons

Monday – Friday  
9:00 – 14:30 CET

6 – 20 participants  
Classes at C1+ level

### Description

Comprehensive preparation course for two qualifying language exams: **TestDaF** and **telc C1** for university. The varied learning units are perfectly coordinated and allow for a direct analysis of both test formats.

**Start dates 2024:** Jan 27, Mar 31. Jun 2, Sep 1, and if required after completion of an intensive C1 course.

### Price per week

1 – 4	€ 240
5 – 12	€ 215
13 – 24	€ 190
from 25	€ 180

## 7. Test-DaF preparation course



on|campus, on|line  
20 lessons

Monday – Friday  
9:00 – 12:15 CET

6 – 20 participants  
Classes at C1+ level

### Description

Comprehensive preparation course for **TestDaF** exam. The classes prepare you for both TestDaF formats: paper based or digital. Course designed for six weeks, with entry possible on a weekly basis.

**Start dates 2024:** Jan 27, Mar 31. Jun 2, Sep 1, and if required after completion of an intensive C1 course.

### Price per week

1 – 4	€ 200
5 – 12	€ 175
13 – 24	€ 160
from 25	€ 145

## 8. Telc C1 university preparation course



on|campus, on|line  
10 lessons

Monday – Friday  
13:00 – 14:30 CET

6 – 20 participants  
Classes at C1+ level

### Description

Comprehensive preparation course for telc C1 university exam. Course designed for six weeks, with entry possible on a weekly basis.

**Start dates 2024:** Jan 27, Mar 31. Jun 2, Sep 1, and if required after completion of an intensive C1 course.

### Price per week

1 – 4	€ 135
5 – 12	€ 120
13 – 24	€ 105
from 25	€ 95

\*Temporarily, but not permanently, the group size may be exceeded by on|line participants.

## 9. Individual lessons



on|campus, on|line,  
on|spot

Dates free  
by arrangement

A1 – C2

### Description

One-to-one classes. Lessons can be arranged flexibly with the teacher regarding time and place: on|campus, at home in front of your laptop, (on|line) or at a location of your choice (on|spot). The lessons are tailored to your needs and possible on every level (A1 – C2). Lessons on weekends (Sat/Sun) for 15 % extra charge. Placement test and certificate included. Minimum booking 4 lessons (2 × 90 minutes).

### Price per teaching hour

for 1 participant € 45  
for 2 – 5 participants € 70

## 10. Corporate training



on|campus, on|line,  
on|spot

Dates free  
by arrangement

A1 – C2

### Description

One-to-one classes. Schedule (weekdays) and industry-specific course content according to customer requirements. Analysis of client needs, placement test, teaching materials, additional on|line exercises and a high-quality certificate of completion from a university continuing education course included. Lessons also available directly at the workplace (on|spot), at no extra charge. Minimum booking 6 lessons (3 × 90 minutes).

### Price per teaching hour

for 1 participant € 65  
for 2 – 5 participants € 95



# English



## 11. Summer course\*



on|campus, on|line  
15 hours per week

June 30 – August 29, 2025  
Monday – Friday 13:00 – 15:30 CET

6–12 participants | A2 – C1

### Description

Intensive Standard English course in a small group. Teaching material included! Course designed for nine weeks, with entry possible on a weekly basis.

### Price per week

1–9 € 190

## 12. Combined German + English course



on|campus, on|line  
20 + 15 hours per week

June 30 – August 29, 2025  
Monday – Friday 09:00 – 15:30 CET

6–12 participants | A2 – C1

### Description

Two in one! Learn German in the morning and English in the afternoon as an intensive course in a small group. Course designed for nine weeks, with entry possible on a weekly basis.

### Price per week

1–9 € 375

\*upon request possible throughout the year



### 13. Individual lessons



on|campus, on|line, on|spot

Dates free by arrangement

A1 – C2

#### Description

One-to-one classes. Lessons can be arranged flexibly with the teacher regarding time and place: on|campus, at home in front of your laptop, (on|line) or at a location of your choice (on|spot). The lessons are tailored to your needs and possible on every level (A1 – C2). Lessons on weekends (Sat/Sun) for 15 % extra charge. Placement test and certificate included. Minimum booking 4 lessons (2 × 90 minutes).

#### Price per teaching hour

for 1 participant € 45  
for 2 – 5 participants € 70

### 14. Corporate training



on|campus, on|line, on|spot

Dates free by arrangement

A1 – C2

#### Description

One-to-one classes. Schedule (weekdays) and industry-specific course content according to customer requirements. Analysis of client needs, placement test, teaching materials, additional on|line exercises and a high-quality certificate of completion from a university continuing education course included. Lessons also available directly at the workplace (on|spot), at no extra charge. Minimum booking 6 lessons (3 × 90 minutes).

#### Price per teaching hour

for 1 participant € 65  
for 2 – 5 participants € 95

# Other Languages





## 15. Individual lessons “EU”



on|campus, on|line, on|spot

Dates free by arrangement

European foreign language (except German, English), including Russian and Turkish, by choice

A1 – C2

### Description

One-to-one classes. Lessons can be arranged flexibly with the teacher regarding time and place: on|campus, at home in front of your laptop, (on|line) or at a location of your choice (on|spot). The lessons are tailored to your needs and possible on every level (A1–C2). Lessons on weekends (Sat/Sun) for 15 % extra charge. Placement test and certificate included. Minimum booking 4 lessons (2 × 90 minutes).

### Price per teaching hour

for 1 participant € 50  
for 2–5 participants € 75

### Company Training

20 % surcharge

## 16. Individual lessons “World”



on|campus, on|line, on|spot

Dates free by arrangement

Foreign language of choice

A1 – C2

### Description

One-to-one classes. Lessons can be arranged flexibly with the teacher regarding time and place: on|campus, at home in front of your laptop, (on|line) or at a location of your choice (on|spot). The lessons are tailored to your needs and possible on every level (A1–C2). Lessons on weekends (Sat/Sun) for 15 % extra charge. Placement test and certificate included. Minimum booking 4 lessons (2 × 90 minutes).

### Price per teaching hour

for 1 participant € 55  
for 2–5 participants € 80

### Company Training

20 % surcharge



# Language tests at VICTORIA

## 1. TestDaF exam



German test for the higher levels from B1, required for enrollment at German universities. The TestDaF tests all 4 core competencies (reading, listening, writing, and speaking), whereby a certain result can be achieved in each core competency, which indicates the respective language level. The TestDaF is offered digitally as well as paper-based.

**Duration** approx. 4,5 h

**Examination fee** € 210 (digital); € 215 (paper based)

### Registration

online at [testdaf.de](https://testdaf.de) (digital exam)  
at VICTORIA [info@victoria-languages.de](mailto:info@victoria-languages.de)  
(paper based exam)

**Evaluation** 4 – 6 weeks

For test dates and registration periods,  
please see TestDaF website:  
[testdaf.de](https://testdaf.de)



## 2. Telc exam



Language test, which is offered for all levels from A1 – C2 (in addition to German, other languages are also possible on request). The telc test checks all 4 core competencies of the respective tested level (reading, listening, writing and speaking) and can only be taken for one level at a time as well as in a specialized language.

**Duration** 1 h – 4,5 h (depending on level and focus)

### Examination fee German

A1 – A2	€ 160
B1 – B2	€ 180
C1 – C2	€ 190
C1 for university	€ 215

Further examination variants and languages upon request

### Registration

Up to 30 working days (not including Saturday) before exam date possible

**Evaluation** 4 – 6 weeks

### 2025 test dates for telc C1 university exam

Jan 22, Feb 19, Mar 19, Apr 30, May 28, Jun 25, Jul 30,  
Aug 20, Sep 24, Oct 29, Nov 27, Dec 10

### Additional fees

Desired date: € 30

Late registration fee: registration from the 29<sup>th</sup> to the 14<sup>th</sup> day before the exam € 35

### 3. VICTORIA exam



Languages: German, English | A1 – C2

Exam designed by our qualified teachers. The exam checks all 4 core competencies of the respective tested level (reading, listening, writing and speaking).

Applicants to VICTORIA | International University of Applied Sciences or iba | International University of Cooperative Education can have their B2 or C1 language level (German or English) certified easily, quickly, and at a one-time special price. We guarantee a result within 48 hours of taking the exam.

**Dates** every second Tuesday

#### Registration

Up to 30 working days (not including Saturday) before exam date possible

#### Fees

VICTORIA or iba applicants	€ 150
External participants	€ 200

### 4. OnSET



Languages: English, German

Assess your language skills – fast, precise, online. Fast and uncomplicated assessment of your German or English level. The test takes only one hour and you will receive the result immediately afterwards!

#### Dates every month

2025: Jan 16, Feb 13, Feb 27, Mar 20, Apr 10, May 8, May 22, Jun 12, Jun 26, Jul 17, Aug 14, Aug 28, Sep 11, Sep 25, Oct 9, Nov 6, Dec 4

**Registration** still possible until one day before

**Exam fee** € 25

### 5. TOEFL



The TOEFL test offers you the opportunity to have your English level certified. Whether you need it for study or work, the TOEFL test is ideal. The certificate is internationally recognized and preferred.

The test consists of 4 sections – Reading, Listening, Speaking and Writing – that measure academic English skills as they are actually used in the classroom.

**Registration and Payment** via ETS Homepage

**Evaluation** Directly via ETS.

On the TOEFL account approx. 10 days after the test

**Validity of the certificate** 2 years

**Exam fee** from \$ 265

#### **i** Exam Organization

**You are not sure which exam you need?** Make sure you think about the purpose of the test. For example: Will the certificate be recognized by the institution you hand it in?

Our staff will be happy to help you finding the test most suitable for your needs!

info@victoria-languages.de

agents: request@victoria-languages.de

For a detailed overview of most of the test dates see pages 28 – 29.

# Study preparation



## Study Advisory Service VICTORIA

Our Language Institute is also the International Office of the state-recognized VICTORIA | International University of Applied Sciences of the F+U Group in Berlin, where students can enroll in German- and English-language Bachelor's and Master's programs with a focus on business. With thirteen specializations for the B.A. Business Administration alone – such as Hotel and Tourism Management or Marketing Communication and Digital Media – as well as two permeable study models (dual and full-time attendance), students are given the greatest possible planning flexibility. The International Management (B.A.) program complements the university's profile with an exciting English-language course of study with an integrated stay abroad, e.g. in Dublin, Ireland. Our language school provides free assistance with all application processes at VICTORIA | International University of Applied Sciences. Our language courses and exclusive VICTORIA language certificates qualify students for admission to the university.

**VICTORIA**  
INTERNATIONALE HOCHSCHULE

## Provisional Admissions

For students who have booked an intensive course at our school with a course duration of at least 12 weeks and need provisional admission for their visa application, we offer assistance with university applications to a maximum of two universities. We assist with:

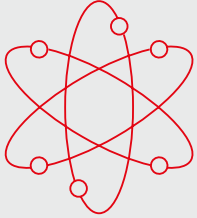
- Review of application documents
- Preparation of application to universities
- Review and editing of letter/resume
- Communication with universities

**Time for processing:** takes up to eight weeks. Please submit your application in time.

**Admission requirement:** Proof of university entrance qualification in the home country

**Fee:** € 550 plus a possible processing fee for the respective university. Successful approval cannot be guaranteed. In case of rejection, the initial 200 € of the administrative fee will be refunded; the processing fee of the university is not refundable.

# Berlin in figures



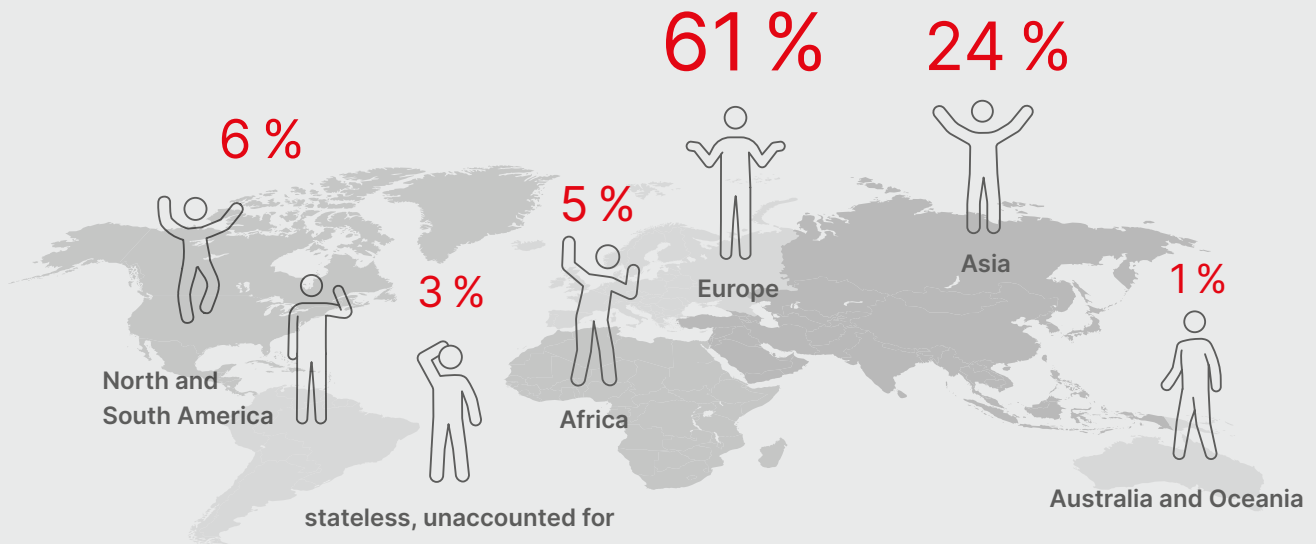
## Berlin as a location for science

- Four universities and Charité-Universitätsmedizin Berlin
- Six universities of applied sciences
- Four art academies

- Over 30 state-recognized private universities
- 70 non-university research institutions
- International students: over 21 percent

Source: Berlin-Brandenburg Statistics Office, status 2020

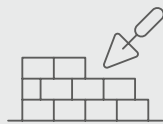
## Nationalities in Berlin



Source: Berlin-Brandenburg Statistics Office (Status 2022)

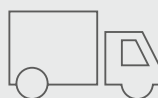
## Companies in Berlin

8 % Construction



3 % Mining, manufacturing, Energy/water supply

22 % Trade and hospitality, transport



44 % Corporate Service

23 % Public and private Services

Source: Berlin-Brandenburg Statistics Office (Status 2022)

# Living at VICTORIA



## Arrival and departure

- **Move-in:** Sundays (10:00–21:00). Our accommodation team will get in touch with you to arrange your arrival.
- **Move-out:** Saturdays (until 12:00).

## WLAN

- All VICTORIA accommodations are equipped with internet access. Some of our host families also allow shared use of their computers or WLAN networks for an additional fee.
- In all cases, the German Internet law in its entirety and our IT Usage Regulations in particular must be observed.

## Cleaning and facilities

- **Common areas** are cleaned regularly by VICTORIA. We expect all our guests to clean up after themselves after using the kitchens and bathrooms, so the next person can use the facilities right away
- For the entire duration of your stay, you are responsible for cleaning the rooms yourself
- **Bed linen and towels:** Bed linen is provided once at move-in, however, please bring your own towels.
- **Washing utensils, dishwashing detergent, and hygiene products:** Commodities such as soap, shower gel, dishwashing detergent, and toilet paper must be provided by the student.

## Catering, Food Court

- All of our accommodations are equipped with shared kitchens.
- Meals with the host families are provided according to the booking.
- Countless restaurants and bistros close to the school. We recommend the varied food court of The Playce at Potsdamer Platz or the nearby Mall of Berlin with over 30 snack restaurants.

## Extra Fees

- **Administration fee:** € 80
- **Room Deposit:** € 300
- **Kitchen Utensils Deposit:** € 70
- **Moving Fee (at own request):** € 60

## General Terms

- **Double room bookings** are available only for joint arrival and booking.
- **Our dormitory rooms** are available for single bookings from the age of 18; male and female only dorms available if required (2–3 beds).
- **Smoking is not allowed** in all areas of any of our accommodations – that includes communal areas, balconies and yards.
- In all cases, please bear in mind that all our accommodation, including that in higher categories, has a 'student' character.
- **Cancellations** are possible depending on price category. To be applied for in writing with a 4-full-week cancellation period. The cancellation fee is 100€.
- **Accommodation fees** are structured weekly. Discounts are available for long-term bookings paid in advance.



## **i** Price Structure

Prices for our accommodation are structured weekly and differ according to the number of weeks you book. We offer discounts for long-term bookings. **The more you book, the lower the weekly price gets!**

**VICTORIA Deal:** Best price for 20 weeks or more! **Full payment in advance required.** Cancellation no longer possible.



## Campus

Living directly on campus, under one roof with the language school and university! Within walking distance: government district, Reichstag, Brandenburg Gate, Friedrichstraße, Gendarmenmarkt, Tiergarten and Gleisdreieck Park, the largest shopping mall in Berlin ("Mall of Berlin"), and much more. Very easy to reach by S-Bahn and U-Bahn.

Small single rooms (approx. 8 sqm) and larger double rooms on the 4th and 5th floors of the campus share two fully equipped kitchen and dining room areas with shared refrigerators, private kitchenware lockers as well as WC and communal showers (gender separation).

Rent per week and bed												Extra day <sup>3</sup>	
1–4 weeks			5–12 weeks			from 13 weeks			from 20 weeks*				
Single	Double	Shared	Single	Double	Shared	Single	Double	Shared	Single	Double	Shared	Single	Db./Sh.
€ 250	€ 180	€ 160	€ 220	€ 170	€ 140	€ 210	€ 160	€ 130	€ 190	€ 140	€ 120	€ 85	€ 65



## Hostel

The Academy Hostel Berlin is located **just one subway stop away**, or a **15 minute walk from school**. Each room has a private bathroom. The spacious communal kitchen with dining room and private lockers for kitchenware is located in the basement. Directly across the street from

the hostel is a large, newly built sports and recreation park (Gleisdreieck), where you can play basketball, beach volleyball, table tennis, etc., and also run and skate for free.

Rent per week and bed												Extra day <sup>3</sup>	
1–4 weeks			5–12 weeks			from 13 weeks			from 20 weeks*				
Single	Double	Shared	Single	Double	Shared	Single	Double	Shared	Single	Double	Shared	Single	Db./Sh.
€ 275	€ 200	€ 170	€ 250	€ 190	€ 155	€ 245	€ 175	€ 150	€ 230	€ 160	€ 140	€ 95	€ 70

\*VICTORIA Deal: Best price for full rent prepayment. No cancellation possible.





## Host families

Would you like to learn German even more intensively and use it in your daily life? Do you want to get to know life in Berlin from the locals and keep in touch with Germany's most exciting city even after leaving Berlin? Our Berlin host families are carefully selected small families, couples or

singles, often with years of hosting experience, who are interested in intercultural exchange and are available as mentors and guides in Berlin's big city life. We are happy to consider your wishes. We strive to find the perfect host family for you.

Category	Distance from the school	Rent per week/room <sup>1</sup>						Extra day <sup>1,3</sup>   Rent per day/room	
		1-4 weeks		5-12 weeks		from 13 weeks		Single	Double
		Single	Double	Single	Double	Single	Double		
B	Maximum 50 minutes by public transport <sup>2</sup>	€ 200	€ 370	€ 185	€ 350	€ 170	€ 315	€ 50	€ 75
A	Maximum 30 minutes by public transport <sup>2</sup>	€ 240	€ 450	€ 220	€ 410	€ 200	€ 370	€ 55	€ 85

<sup>1</sup>Charge for catering: Breakfast € 60 per week; half board (breakfast and dinner) € 100 per week. For extra days, meals will be charged on a pro-rata basis.

<sup>2</sup>Travel time to S/U Potsdamer Platz, S Anhalter Bahnhof, U Mendelssohn-Bartholdy-Park by public transport. The way to the stop is not included, but is usually only 5-10 minutes walk from accommodation.

<sup>3</sup>An extra day is invoiced for arrivals on Saturday or departures on Sunday.



# VICTORIA education partner



VICTORIA is an innovative, state-recognized private university of applied sciences with headquarters in Berlin and a campus in Baden-Baden with currently around 600 students. It offers both bachelor's and master's programs, and management-oriented degree programs in two study models thus complementing the existing tertiary education system with new study models: classic studies, practice-integrated dual studies – both full and part time. Within the framework of this concept, students have the opportunity to choose the form of study that best suits their preferences and individual circumstances. Additionally, we have partners cooperating from the economy and a modern, flexible and well-trained junior staff.



The iba | International University of Cooperative Education is Germany's largest state-recognized vocational academy.

As part of the practice-integrated degree programs in Business Administration and Business Administration International Management in 14 specializations, Social Pedagogy & Management, Social Pedagogy, Management & Coaching and Engineering & Management, as well as the training-integrated degree programs – Physiotherapy and Applied Therapy Sciences (Focus on Occupational Therapy), the iba imparts to its dual students professional content and introduces them to management tasks, in order to train them to become decision-makers of tomorrow. After three years, the dual students will have a state-recognized bachelor's degree and three years of work experience.



# Central Location



- 1 Brandenburg Gate
- 2 Deutscher Bundestag/Reichstag
- 3 Akademie der Künste
- 4 Komische Oper
- 5 Dussmann Kulturkaufhaus (Bücher, Musik)
- 6 Humboldt-Universität (HU)
- 7 Galeries Lafayette (Frz. Kaufhaus)
- 8 Hochschule für Musik Hanns Eisler (inkl. Mensa)
- 9 Gendarmenmarkt (Konzerthaus, Deutscher Dom, Französischer Dom)
- 10 Mall of Berlin (Shops, Foodcourt)
- 11 Embassy of the USA
- 12 Embassy of the Russian Federation
- 13 Tiergarten
- 14 Postamt
- 15 The Playce (Shops, Restaurants)
- 16 Alte Nationalgalerie, Gemäldegalerie, Kunstgewerbemuseum, Musikinstrumenten-Museum, Berliner Philharmonie
- 17 Staatsbibliothek zu Berlin
- 19 Deutsches Spionagemuseum
- 19 Martin-Gropius-Bau
- 20 Topographie des Terrors
- 21 Tempodrom
- 22 AoL Hostel, Gleisdreieck-Park, Brlo-Brauerei
- 23 Victory Column "Victoria"

# Examination calendar 2025

January	February	March	April	May	June
1 Wed <small>New Year</small>	1 Sat	1 Sat	1 Tue <b>VICTORIA Exam</b>	1 Thu <small>Labor Day</small>	1 Sun
2 Thu	2 Sun	2 Sun	2 Wed	2 Fri	2 Mon <small>23</small>
3 Fri	3 Mon <small>6</small>	3 Mon <small>10</small>	3 Thu	3 Sat	3 Tue <b>TestDaF digital</b>
4 Sat	4 Tue	4 Tue	4 Fri	4 Sun	4 Wed
5 Sun	5 Wed	5 Wed	5 Sat	5 Mon <small>19</small>	5 Thu
6 Mon <small>2</small>	6 Thu <b>TestDaF digital</b>	6 Thu	6 Sun	6 Tue <b>VICTORIA Exam</b>	6 Fri
7 Tue	7 Fri	7 Fri	7 Mon <small>15</small>	7 Wed	7 Sat
8 Wed	8 Sat	8 Sat <small>International Women's Day</small>	8 Tue	8 Thu <b>OnSET</b>	8 Sun <small>Whit Sunday</small>
9 Thu	9 Sun	9 Sun	9 Wed	9 Fri	9 Mon <small>Whit Monday</small> <small>24</small>
10 Fri	10 Mon <small>7</small>	10 Mon <small>11</small>	10 Thu <b>OnSET</b>	10 Sat	10 Tue <b>VICTORIA Exam</b>
11 Sat	11 Tue <b>VICTORIA Exam</b>	11 Tue <b>TestDaF paper-based</b>	11 Fri	11 Sun <small>Mother's Day</small>	11 Wed
12 Sun	12 Wed	12 Wed	12 Sat	12 Mon <small>20</small>	12 Thu <b>OnSET</b>
13 Mon <small>3</small>	13 Thu <b>OnSET</b>	13 Thu	13 Sun	13 Tue	13 Fri
14 Tue <b>VICTORIA Exam</b>	14 Fri	14 Fri	14 Mon <small>16</small>	14 Wed	14 Sat
15 Wed	15 Sat	15 Sat	15 Tue <b>VICTORIA Exam</b>	15 Thu <b>TestDaF paper-based</b>	15 Sun
16 Thu <b>OnSET</b>	16 Sun	16 Sun	16 Wed <b>TestDaF digital</b>	16 Fri	16 Mon <small>25</small>
17 Fri	17 Mon <small>8</small>	17 Mon <small>12</small>	17 Thu	17 Sat	17 Tue
18 Sat	18 Tue	18 Tue <b>VICTORIA Exam</b>	18 Fri <small>Good Friday</small>	18 Sun	18 Wed
19 Sun	19 Wed <small>telc</small>	19 Wed <small>telc</small>	19 Sat	19 Mon <small>21</small>	19 Thu
20 Mon <small>4</small>	20 Thu	20 Thu <b>OnSET</b>	20 Sun	20 Tue <b>VICTORIA Exam</b>	20 Fri
21 Tue	21 Fri	21 Fri	21 Mon <small>Easter Monday</small> <small>17</small>	21 Wed	21 Sat
22 Wed <small>telc</small>	22 Sat	22 Sat	22 Tue	22 Thu <b>OnSET</b>	22 Sun
23 Thu	23 Sun	23 Sun	23 Wed	23 Fri	23 Mon <small>26</small>
24 Fri	24 Mon <small>9</small>	24 Mon <small>13</small>	24 Thu	24 Sat	24 Tue <b>VICTORIA Exam</b>
25 Sat	25 Tue <b>VICTORIA Exam</b>	25 Tue	25 Fri	25 Sun	25 Wed <small>telc</small>
26 Sun	26 Wed	26 Wed <b>TestDaF digital</b>	26 Sat	26 Mon <small>22</small>	26 Thu <b>OnSET</b>
27 Mon <small>5</small>	27 Thu <b>OnSET</b>	27 Thu	27 Sun	27 Tue	27 Fri
28 Tue <b>VICTORIA Exam</b>	28 Fri	28 Fri	28 Mon <small>18</small>	28 Wed <small>telc</small>	28 Sat
29 Wed		29 Sat	29 Tue	29 Thu <small>Ascension Day</small>	29 Sun
30 Thu		30 Sun <small>Daylight Saving Time</small>	30 Wed <small>telc</small>	30 Fri	30 Mon <small>27</small>
31 Fri		31 Mon <small>14</small>		31 Sat	

July	August	September	October	November	December
1 Tue	1 Fri	1 Mon <sup>36</sup>	1 Wed	1 Sat	1 Mon <sup>49</sup>
2 Wed	2 Sat	2 Tue <b>VICTORIA Exam</b>	2 Thu	2 Sun	2 Tue
3 Thu	3 Sun	3 Wed	3 Fri <b>German Unification Day</b>	3 Mon <sup>45</sup>	3 Wed
4 Fri	4 Mon <sup>32</sup>	4 Thu	4 Sat	4 Tue	4 Thu <b>OnSET</b>
5 Sat	5 Tue <b>VICTORIA Exam</b>	5 Fri	5 Sun	5 Wed	5 Fri
6 Sun	6 Wed	6 Sat	6 Mon <sup>41</sup>	6 Thu <b>OnSET</b>	6 Sat
7 Mon <sup>28</sup>	7 Thu <b>TestDaF digital</b>	7 Sun	7 Tue	7 Fri	7 Sun
8 Tue <b>VICTORIA Exam</b>	8 Fri	8 Mon <sup>37</sup>	8 Wed	8 Sat	8 Mon <sup>50</sup>
9 Wed	9 Sat	9 Tue	9 Thu <b>OnSET</b>	9 Sun	9 Tue <b>VICTORIA Exam</b>
10 Thu	10 Sun	10 Wed	10 Fri	10 Mon <sup>46</sup>	10 Wed <b>telc</b>
11 Fri	11 Mon <sup>33</sup>	11 Thu <b>OnSET</b>	11 Sat	11 Tue <b>VICTORIA Exam</b>	11 Thu
12 Sat	12 Tue	12 Fri	12 Sun	12 Wed	12 Fri
13 Sun	13 Wed	13 Sat	13 Mon <sup>42</sup>	13 Thu <b>TestDaF digital</b>	13 Sat
14 Mon <sup>29</sup>	14 Thu <b>OnSET</b>	14 Sun	14 Tue <b>VICTORIA Exam</b>	14 Fri	14 Sun
15 Tue	15 Fri	15 Mon <sup>38</sup>	15 Wed	15 Sat	15 Mon <sup>51</sup>
16 Wed <b>TestDaF paper-based</b>	16 Sat	16 Tue <b>VICTORIA Exam</b>	16 Thu <b>TestDaF paper-based</b>	16 Sun	16 Tue
17 Thu <b>OnSET</b>	17 Sun	17 Wed	17 Fri	17 Mon <sup>47</sup>	17 Wed
18 Fri	18 Mon <sup>34</sup>	18 Thu <b>TestDaF digital</b>	18 Sat	18 Tue	18 Thu
19 Sat	19 Tue <b>VICTORIA Exam</b>	19 Fri	19 Sun	19 Wed	19 Fri
20 Sun	20 Wed <b>telc</b>	20 Sat	20 Mon <sup>43</sup>	20 Thu	20 Sat
21 Mon <sup>30</sup>	21 Thu	21 Sun	21 Tue	21 Fri	21 Sun
22 Tue <b>VICTORIA Exam</b>	22 Fri	22 Mon <sup>39</sup>	22 Wed	22 Sat	22 Mon <sup>52</sup>
23 Wed	23 Sat	23 Tue	23 Thu	23 Sun	23 Tue
24 Thu	24 Sun	24 Wed <b>telc</b>	24 Fri	24 Mon <sup>48</sup>	24 Wed <b>Christmas Eve</b>
25 Fri	25 Mon <sup>35</sup>	25 Thu <b>OnSET</b>	25 Sat	25 Tue <b>VICTORIA Exam</b>	25 Thu <b>Christmas Day</b>
26 Sat	26 Tue	26 Fri	26 Sun <b>End Daylight Saving</b>	26 Wed <b>telc</b>	26 Fri <b>Boxing Day</b>
27 Sun	27 Wed	27 Sat	27 Mon <sup>44</sup>	27 Thu	27 Sat
28 Mon <sup>31</sup>	28 Thu <b>OnSET</b>	28 Sun	28 Tue <b>VICTORIA Exam</b>	28 Fri	28 Sun
29 Tue	29 Fri	29 Mon <sup>40</sup>	29 Wed <b>telc</b>	29 Sat	29 Mon <sup>1</sup>
30 Wed <b>telc</b>	30 Sat	30 Tue <b>VICTORIA Exam</b>	30 Thu	30 Sun	30 Tue
31 Thu	31 Sun		31 Fri		31 Wed <b>New Year's Eve</b>

Subject to change without notice. Data as of October 2024.

# Calendar of events\*

## Berlin 2025

Month	When	Event
January	15.01. to 21.01.	Ultraschall-Festival für Neue Musik (with the best composers of our time)
	24.01. to 02.02.	CTM Festival for Adventurous Music and Art
	29.01. to 02.02.	Transmediale (Festival of multimedia and art)
February	03.02. to 06.02.	Berlin Fashion Week
	13.02. to 23.02.	Berlinale (International Film Festival)
	14.02.	ISTAF Indoor (International event for athletics and indoor sports)
March	01.03. to 31.03.	European Month of Photography (Photography Festival)
	04.03. to 06.03.	ITB International Tourism Trade Fair (biggest travel fair world-wide)
	21.03. to 30.03.	MaerzMusik (Festival for new music)
April	02.04. to 09.04.	achtung berlin – New Berlin Film Award
	06.04.	Berlin Half Marathon
	11.04. to 21.04.	Opera Festival at the Berlin State Opera
	25.04. to 27.04.	Gallery Weekend Berlin
May	01.05.	MyFest – Street party in Berlin-Kreuzberg
	02.05. to 20.05.	Theatertreffen (Theater Festival)
	12.05. to 18.05.	XJazz – Berlin Jazz Festival
	18.05.	Internationaler Museumstag
	24.05.	DFB Pokalfinale (Soccer)
June	06.06. to 09.06.	Karneval der Kulturen (Happy street festival with many parades and music)
	21.06.	Fête de la Musique ( Street Music Festival)
	28.06.	Lange Nacht der Wissenschaften (exciting insights into laboratories, archives, libraries, lecture halls of the city)
July	18.07. to 19.07.	Botanische Nacht im Botanischen Garten Dahlem (spectacular light installations, music, artistry)
	26.07.	Christopher Street Day
August	30.08.	Lange Nacht der Museen (Long night of the museums)
	30.08. to 23.09.	Musikfest Berlin (Festival for the new concert season)
September	05.09. to 09.09.	IFA – Internationale Funkausstellung (News from entertainment and communication electronics)
	11.09. to 24.09.	Internationales Literaturfestival Berlin
	10.09. to 14.09.	Berlin Art Week
	14.09.	Tag des offenen Denkmals (unusual insights into famous monuments and historical places)
	28.09.	Berlin Marathon
October	tba	„Berlin leuchtet“ – Festival of Lights
	18.10.	Europa-Meisterschaft Poetry Slam Finale
	30.10. to 02.11.	Jazzfest Berlin
November	tba	Christmas Garden at Botanic Garden
	from end of Nov.	Christmas Market Season
December	31.12.	New Year's Party at Brandenburg Gate

\*Subject to change without notice.  
Information without guarantee.



# More than a language school.

[victoria-languages.de](http://victoria-languages.de)

## **VICTORIA | Academy of Languages**

Bernburger Str. 24 – 25  
10963 Berlin

### **Opening hours**

Monday to Friday 8:00 – 17:00

Phone: +49 30 206176-807  
[info@victoria-languages.de](mailto:info@victoria-languages.de)  
[agents@victoria-languages.de](mailto:agents@victoria-languages.de)  
[victoria-languages.de](http://victoria-languages.de)

